

---

BUILD YOUR DREAM HOME ON YOUR LOT

Bentley Homes Makes it Easy

---



[BentleyHomes.com](https://www.BentleyHomes.com)

## WHY CHOOSE BENTLEY HOMES TO BUILD ON YOUR LOT?

- Our spacious model home, featuring three finished levels, provides inspiration and design ideas.
- If you do not own a building-lot we can help you find one in your desired location.
- The building process will be a breeze when you customize one of our many award-winning home designs.
- Whether you customize a Bentley Homes' design, or have your own plans, we can provide a firm price quickly.
- Our in-house design manager will assist you with customizing and planning your dream home.
- Enjoy minimal architectural fees, and we will manage the entire permitting process.
- Once you've made the decision to move forward, we will prepare the contract, which will clearly state:
  - Base price of your home
  - Specifications
  - Completion date
- Our lenders can provide a single loan covering construction and permanent financing at very attractive rates.
- Our dedicated subcontractors are ready to go to work. Avoid the hassles of remodeling and let us build a brand-new Bentley home for you.
- Minimal to no closing costs.
- Enjoy the benefit of Bentley Homes' 50 years of experience crafting exceptional trend setting homes.

*Relax and congratulate yourself on deciding to purchase a Bentley home.*

Please Contact Nicole Rymer 610.553.3530



*Atlee Custom D Elevation*

### **Atlee Model**

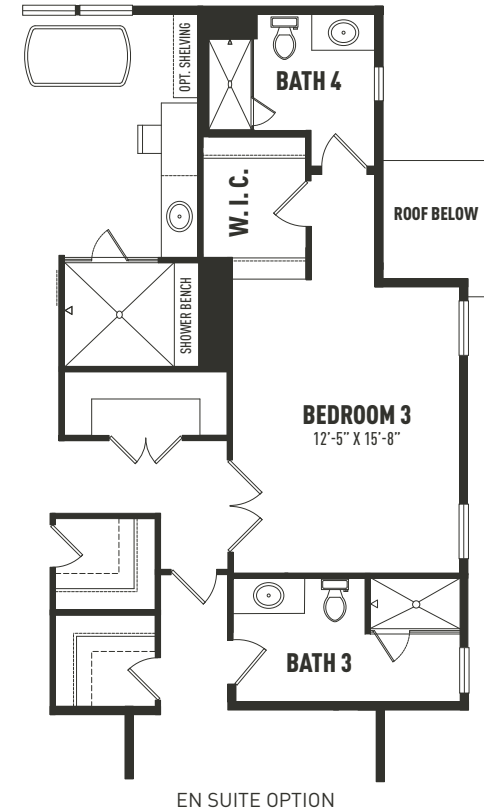
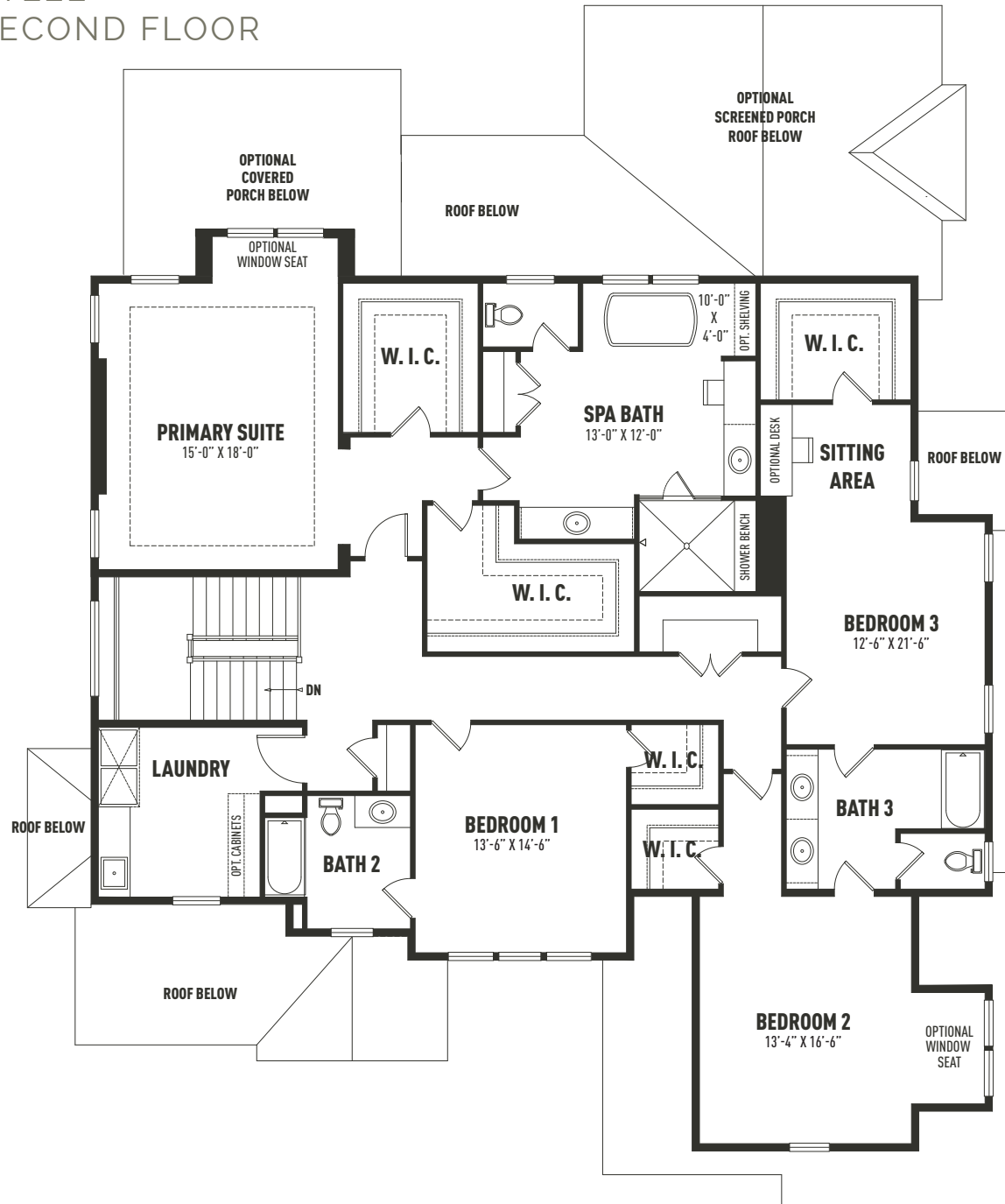
Bentley Homes' popular Atlee model offers 4,436 SF, 4 bedrooms, 3 full baths, and a 3-car garage. The elegant entrance foyer flanked by a library, dining room and three story open main staircase leads to a coffered ceilinged great room. An elegant and spacious 21'6 x 18'0" island kitchen and glass wrapped morning room are open to the great room.

# ATLEE FIRST FLOOR



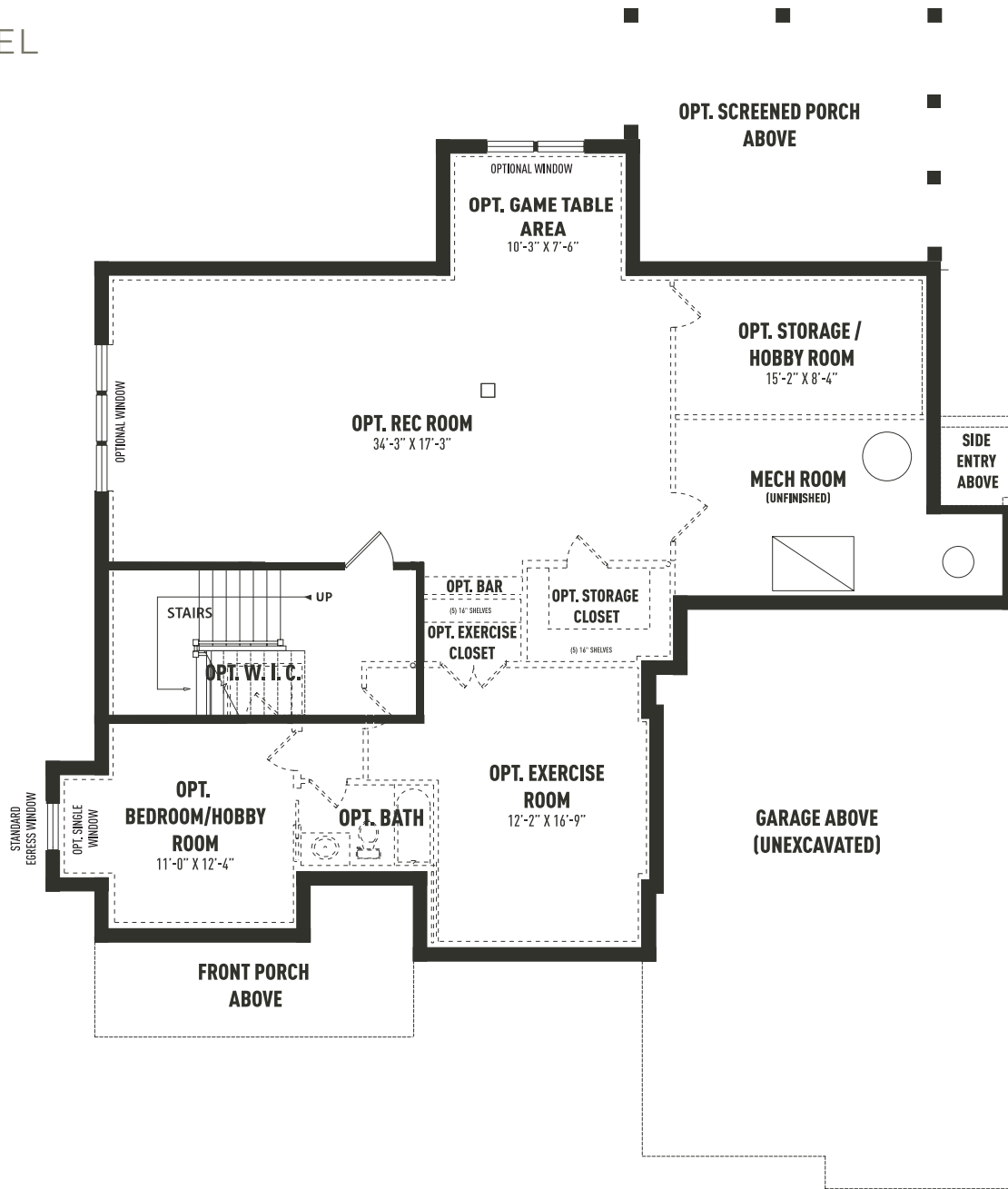
Sketches and illustrations are artist's renderings only. Details, dimensions and colors are subject to change and field variations. All sizes and dimensions are approximate. See sales manager for specifics relating to your home and homesite.

# ATLEE SECOND FLOOR



*Sketches and illustrations are artist's renderings only. Details, dimensions and colors are subject to change and field variations. All sizes and dimensions are approximate. See sales manager for specifics relating to your home and homesite.*

# ATLEE LOWER LEVEL



Sketches and illustrations are artist's renderings only. Details, dimensions and colors are subject to change and field variations. All sizes and dimensions are approximate. See sales manager for specifics relating to your home and homesite.

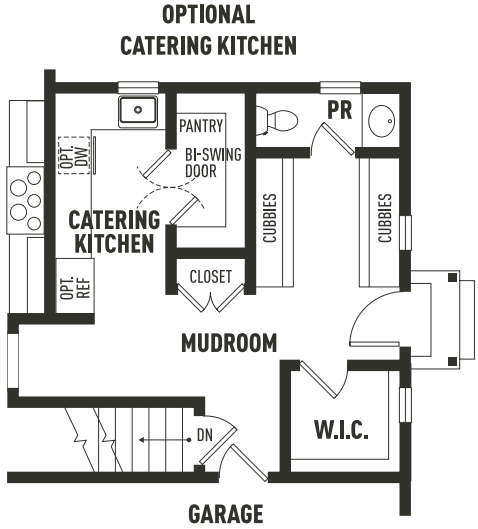


*Elevation includes optional features*

### **Chandler Model**

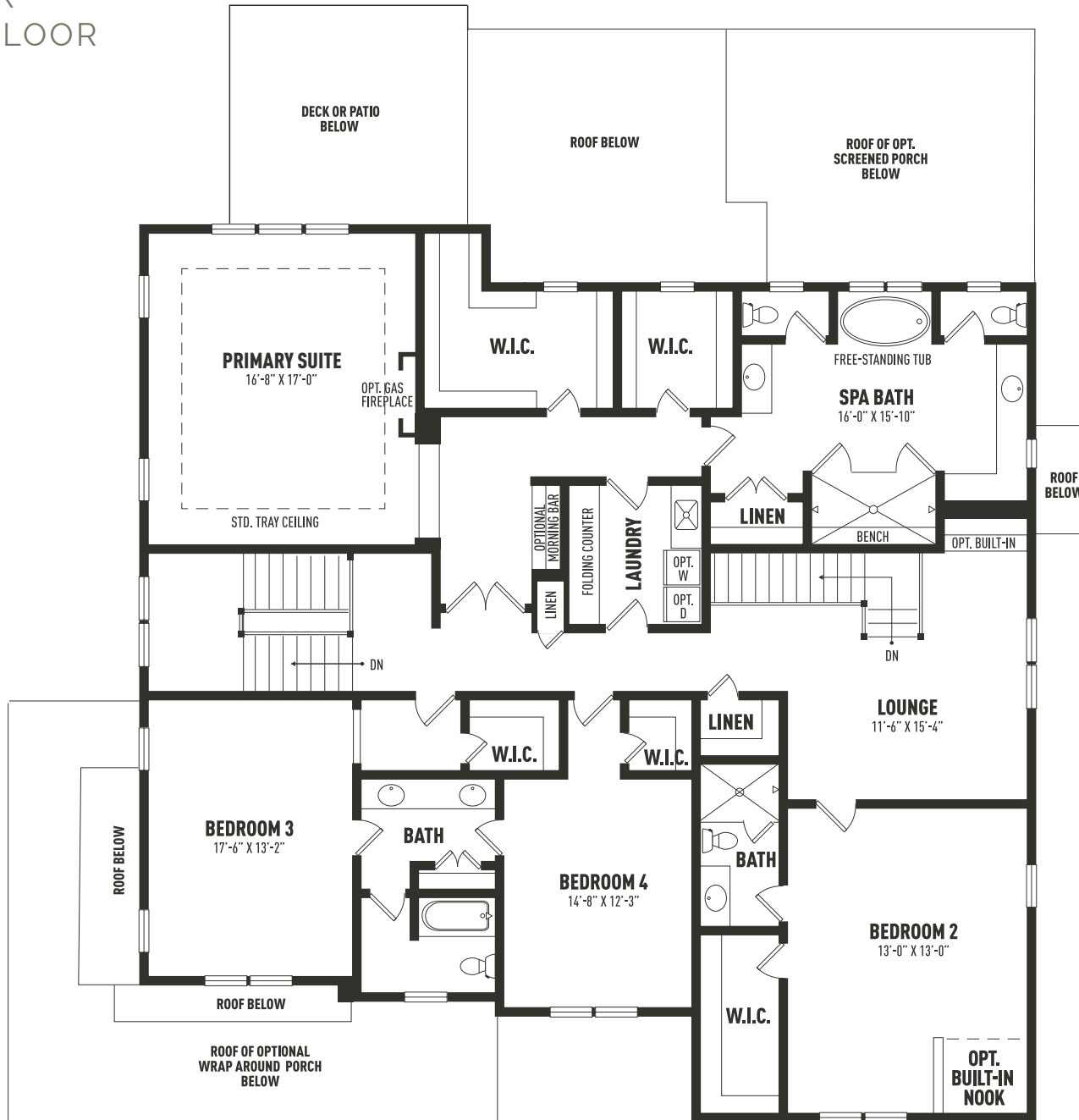
The exciting Chandler design offers 5,235 SF with 10 first floor ceilings, an elegant three story open main staircase and a convenient rear staircase. The home offers abundant comfort and living space with the flexibility to suit your personal and entertainment needs. The spacious lower level provides a variety of finish options including adding a media room a bar, a 5th bedroom and 4th full bath.

# CHANDLER FIRST FLOOR



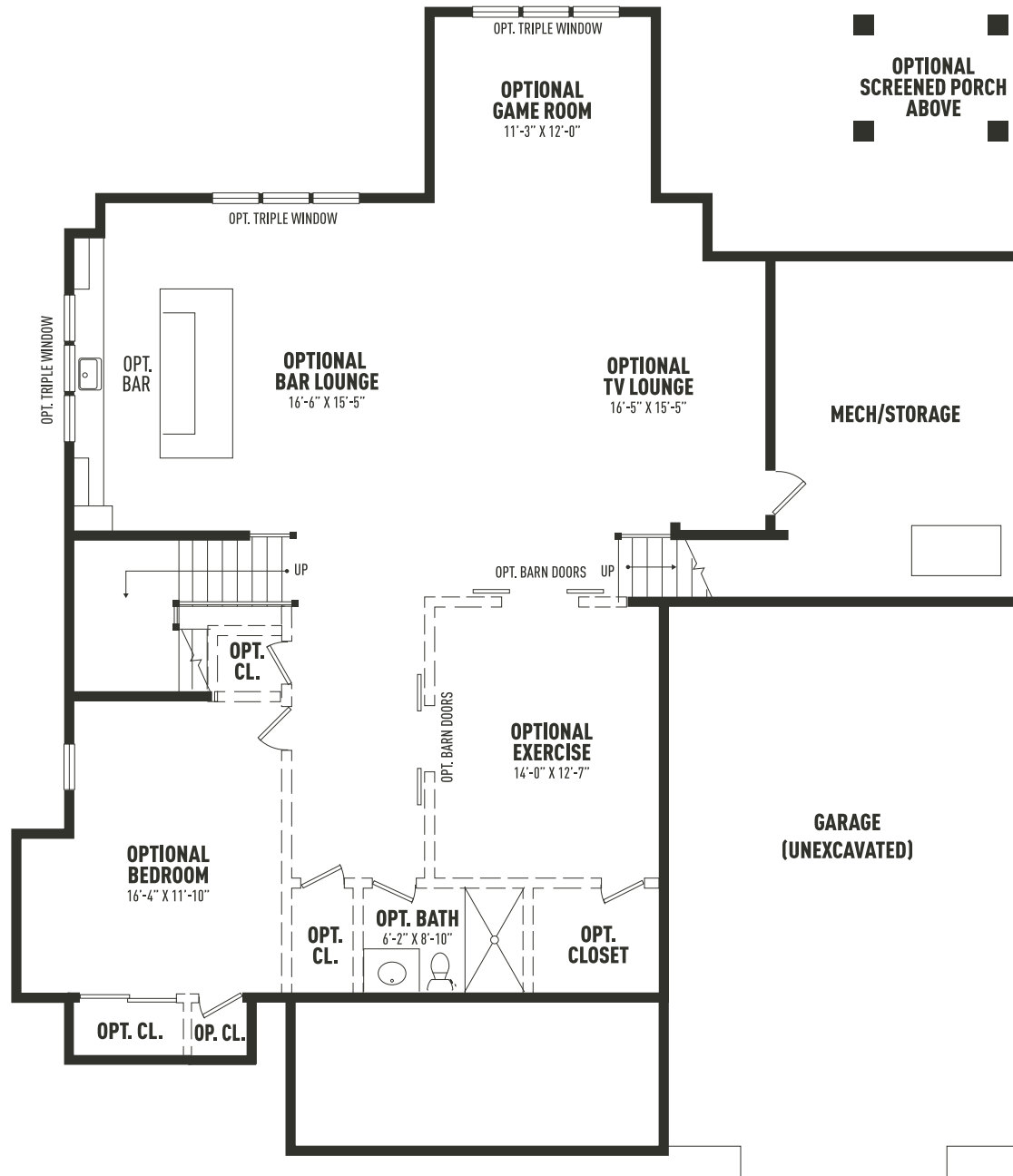
Sketches and illustrations are artist's renderings only. Details, dimensions and colors are subject to change and field variations. All sizes and dimensions are approximate. See sales manager for specifics relating to your home and homesite.

# CHANDLER SECOND FLOOR



*Sketches and illustrations are artist's renderings only. Details, dimensions and colors are subject to change and field variations. All sizes and dimensions are approximate. See sales manager for specifics relating to your home and homesite.*

# CHANDLER LOWER LEVEL



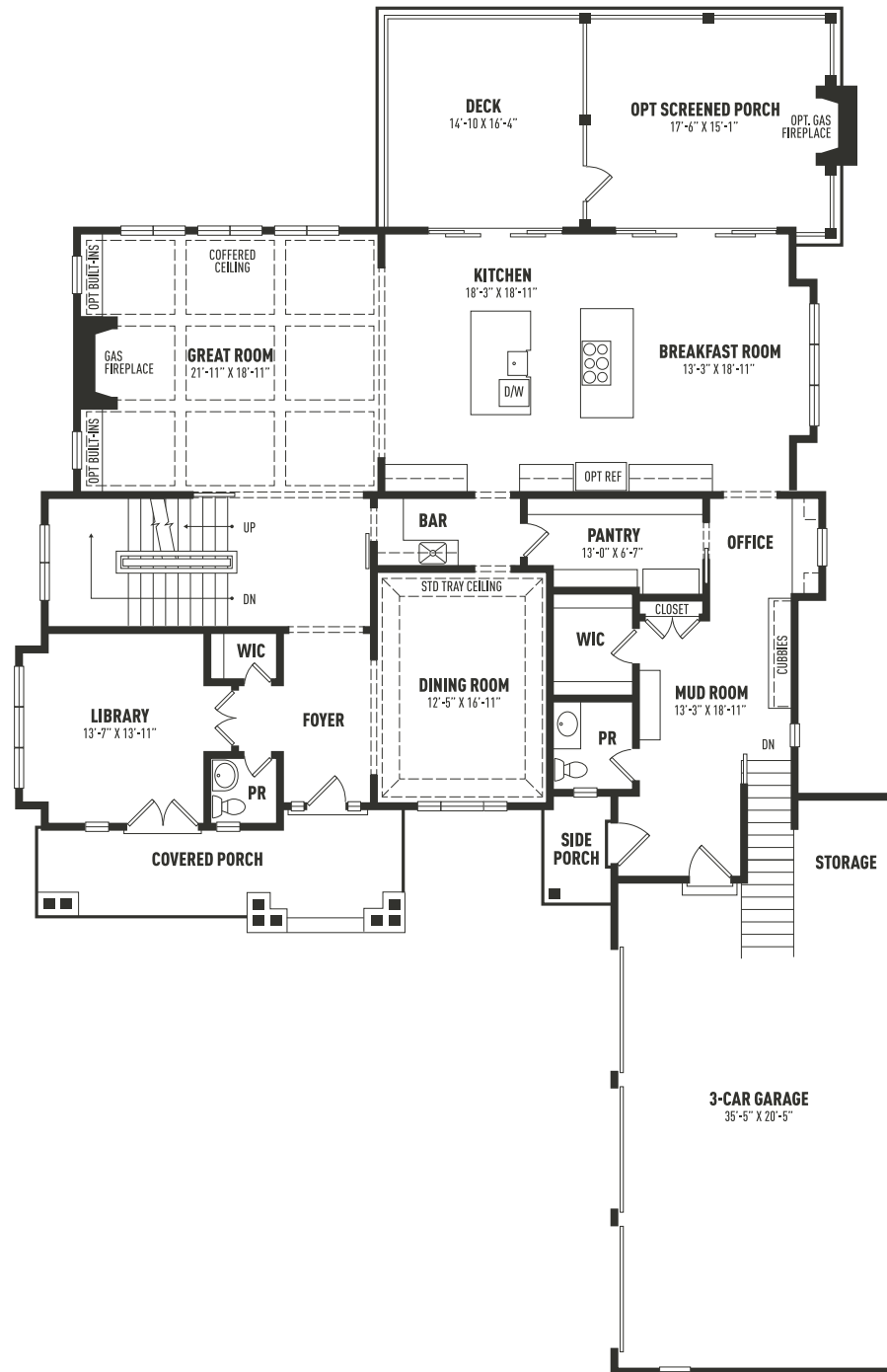
*Sketches and illustrations are artist's renderings only. Details, dimensions and colors are subject to change and field variations. All sizes and dimensions are approximate. See sales manager for specifics relating to your home and homesite.*



### **Hudson Model**

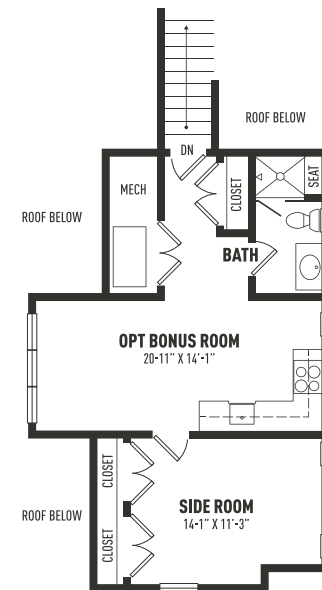
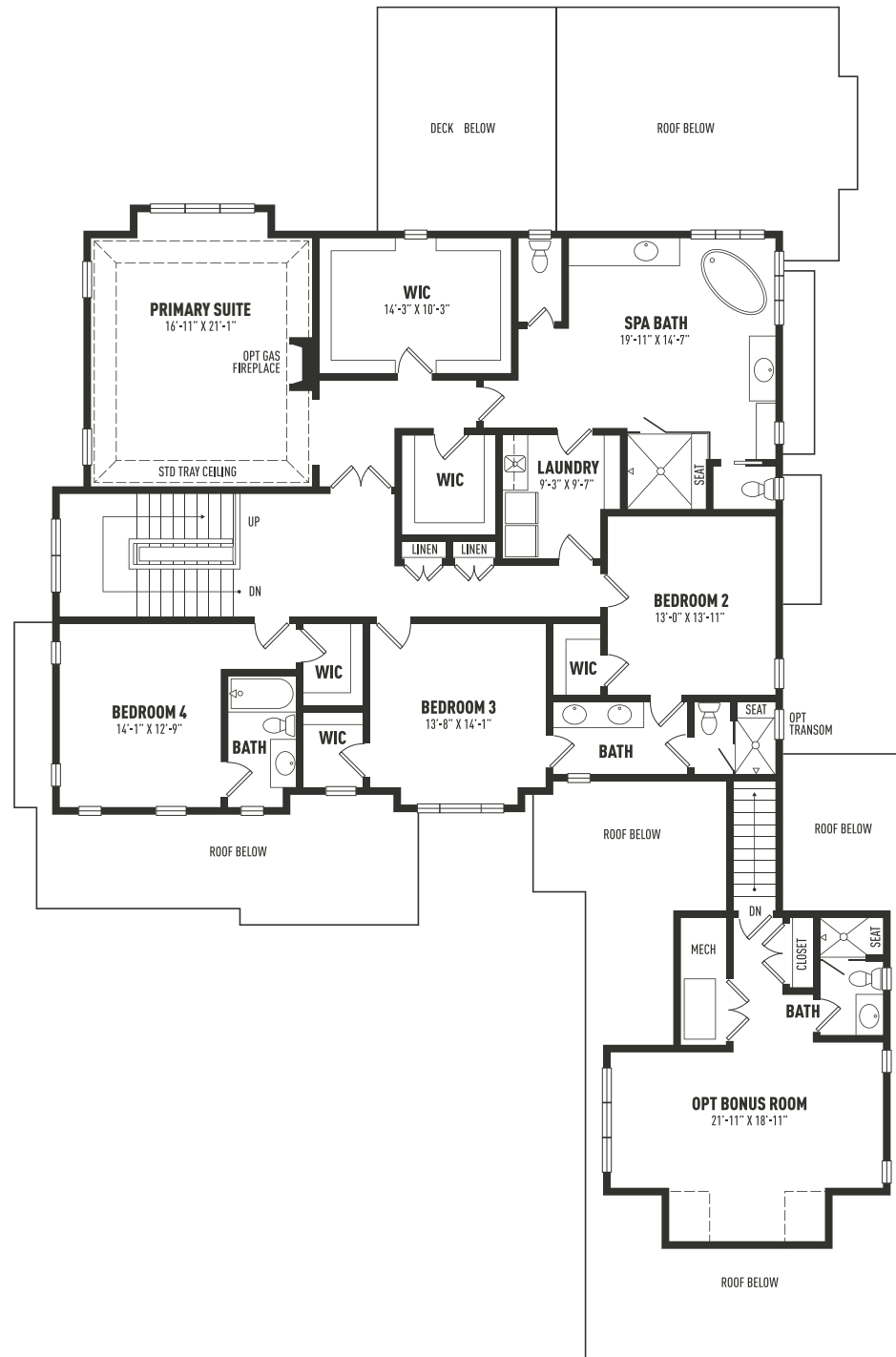
The 5,459 SF Hudson model is spacious charming and perfectly designed for relaxed entertaining while seamlessly meeting your everyday lifestyle needs. Featuring 4 bedrooms, 3 full bathrooms and 2 powder rooms. The Hudson's lower-level offers the opportunity to add substantial living space including a 5th bedroom and 4th full bath.

# HUDSON FIRST FLOOR



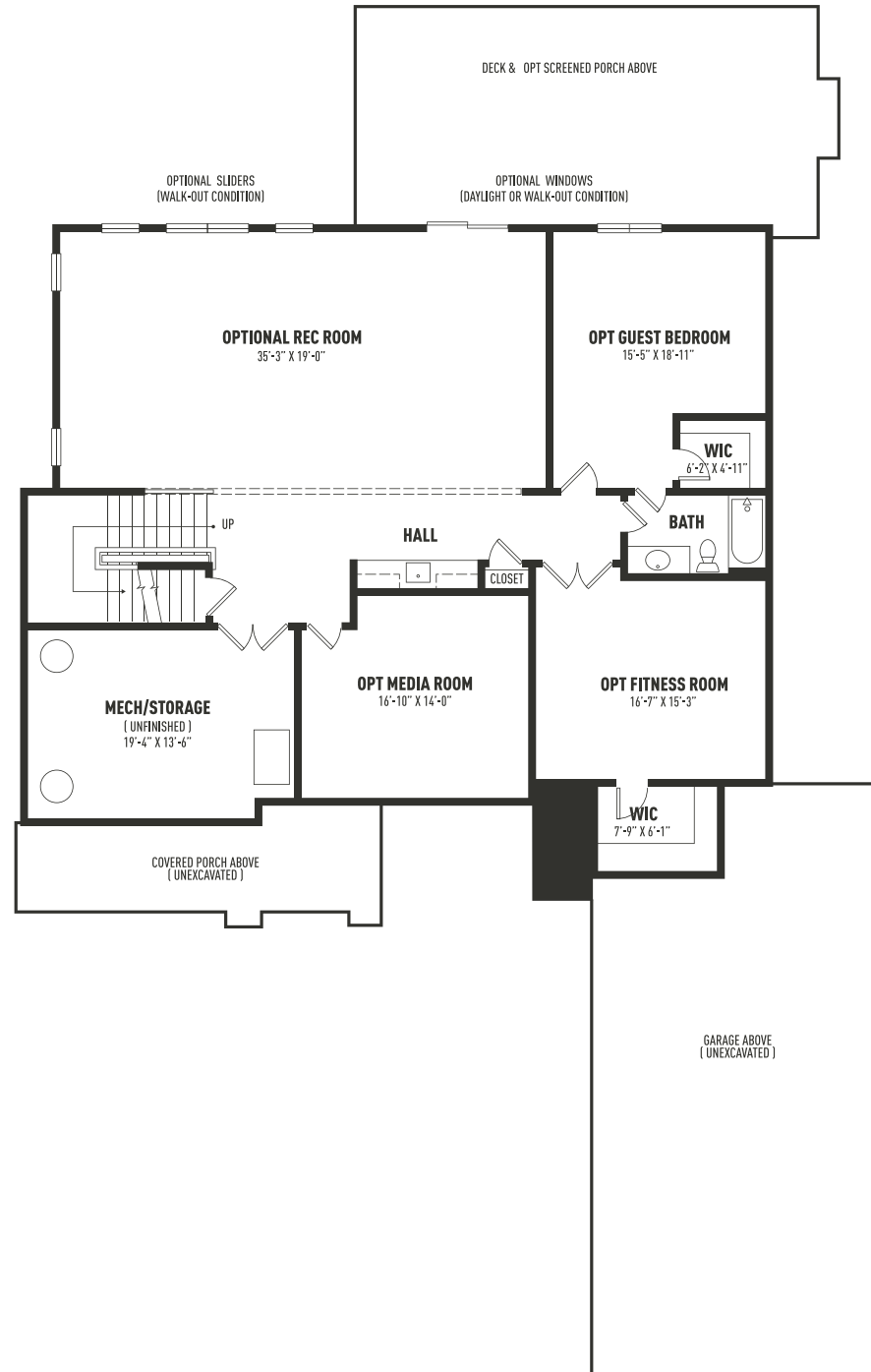
*Sketches and illustrations are artist's renderings only. Details, dimensions and colors are subject to change and field variations. All sizes and dimensions are approximate. See sales manager for specifics relating to your home and homesite.*

# HUDSON SECOND FLOOR



Sketches and illustrations are artist's renderings only. Details, dimensions and colors are subject to change and field variations. All sizes and dimensions are approximate. See sales manager for specifics relating to your home and homesite.

# HUDSON LOWER LEVEL



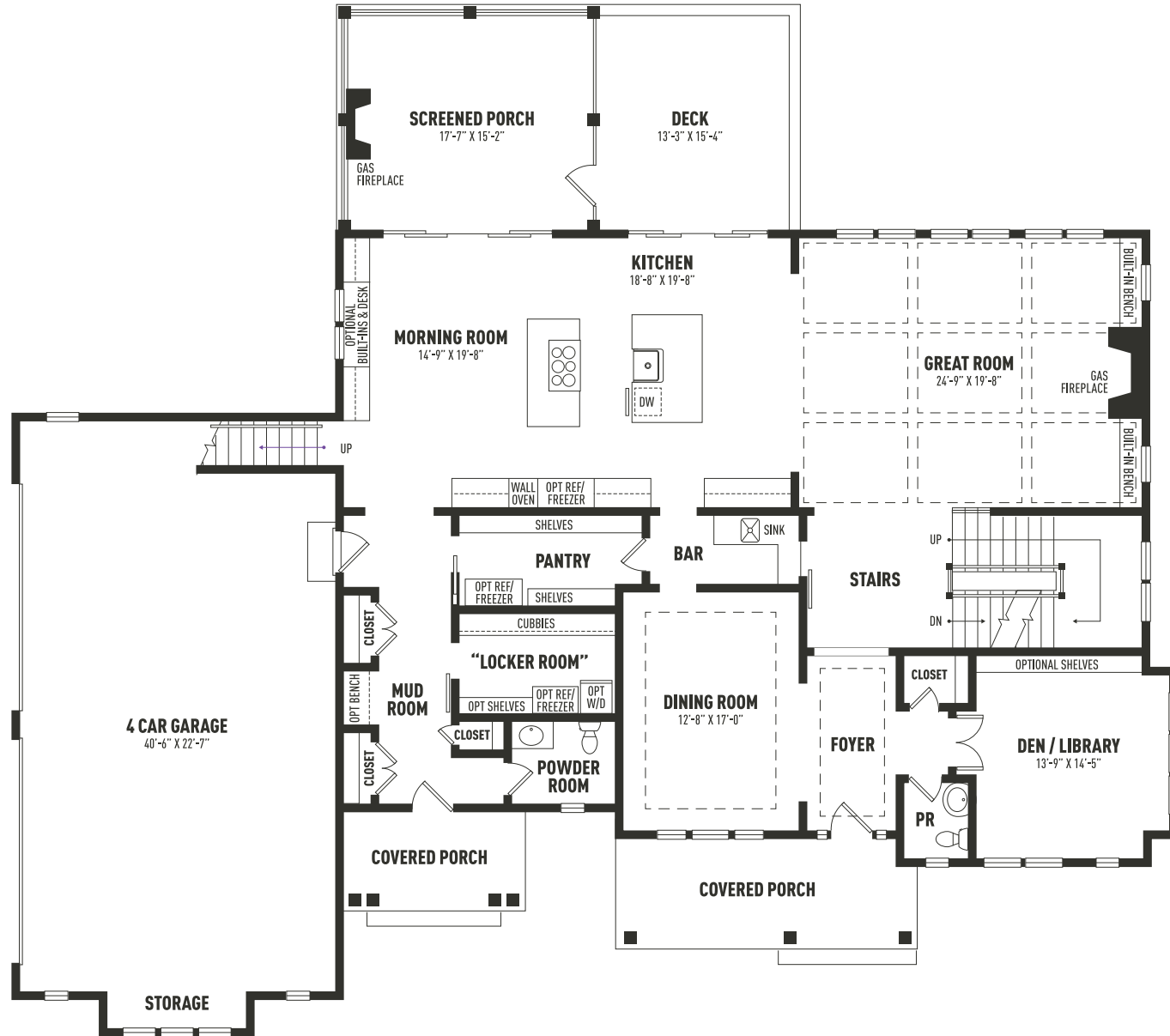
*Sketches and illustrations are artist's renderings only. Details, dimensions and colors are subject to change and field variations. All sizes and dimensions are approximate. See sales manager for specifics relating to your home and homesite.*



### **Mayfield Model**

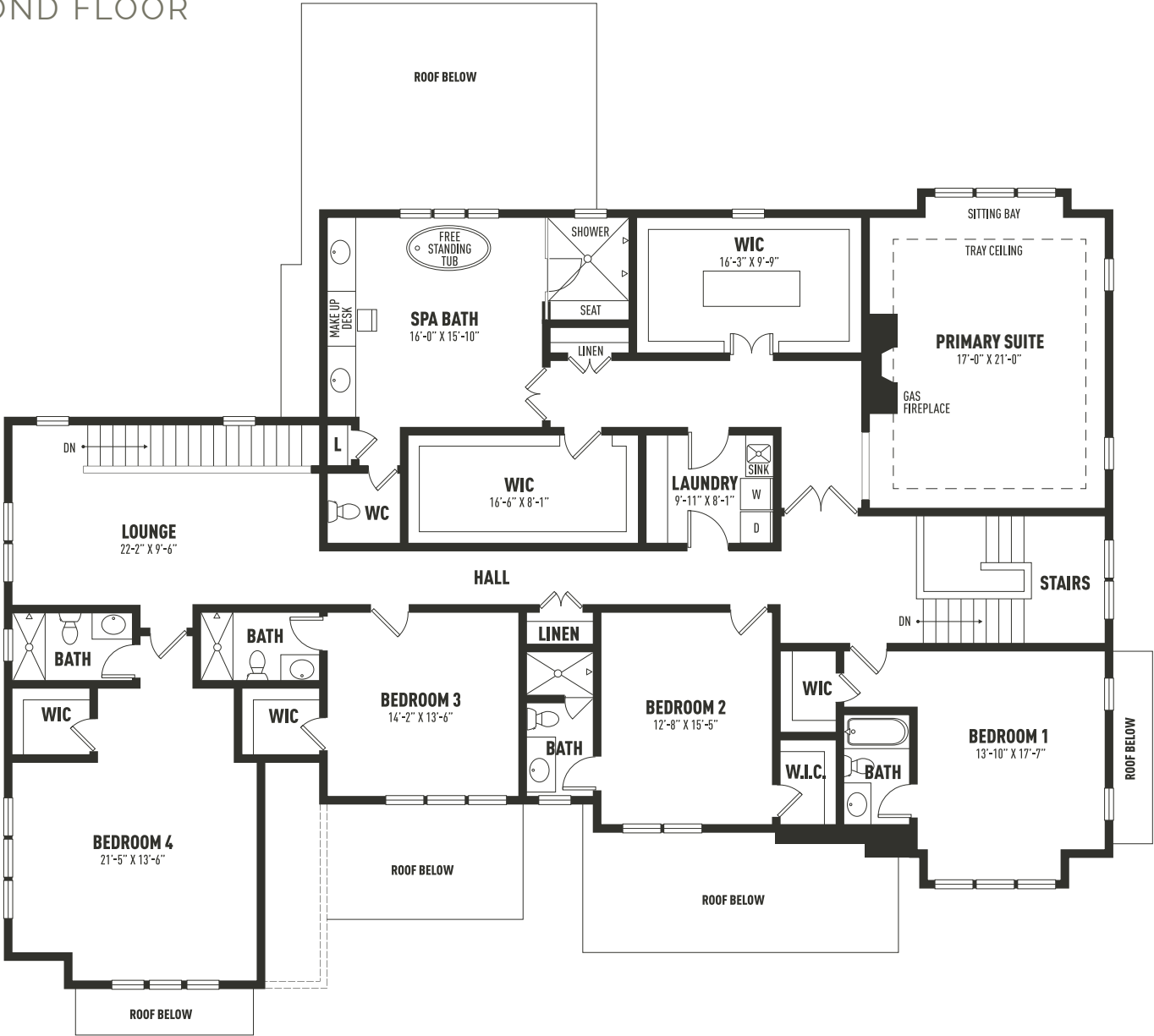
Bentley Homes' beautiful new 6,078 SF Mayfield design features 5 bedrooms, 5 full baths, 2 powder rooms and a 4-car garage. The dual island kitchen, morning room and great room create a literal wall of glass along the rear of the home bathing the home's interior in natural light. The Mayfield's lower-level can be finished to include a 6th bedroom, 6th full bath and added recreation space.

# MAYFIELD FIRST FLOOR



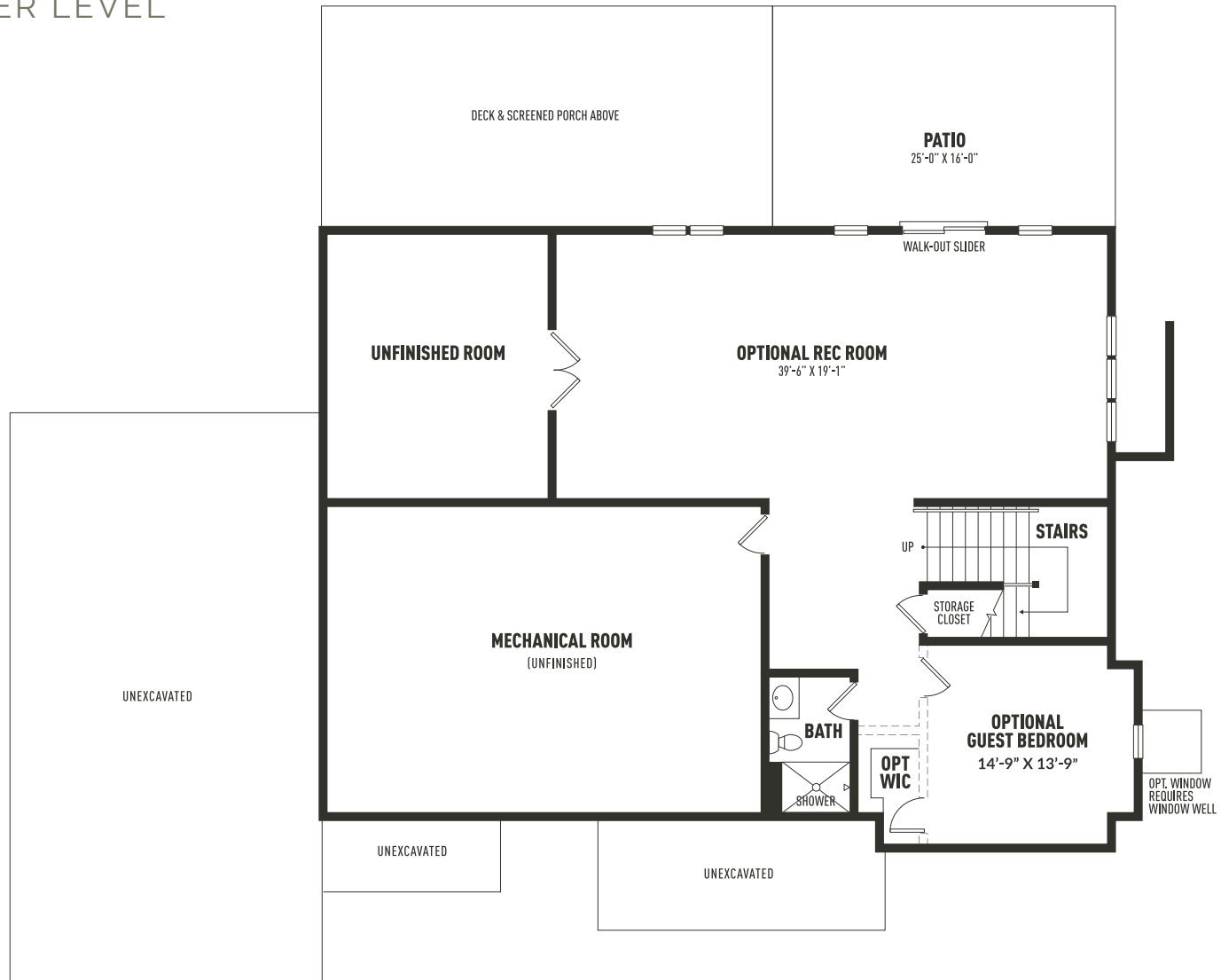
Sketches and illustrations are artist's renderings only. Details, dimensions and colors are subject to change and field variations. All sizes and dimensions are approximate. See sales manager for specifics relating to your home and homesite.

MAYFIELD  
SECOND FLOOR



Sketches and illustrations are artist's renderings only. Details, dimensions and colors are subject to change and field variations. All sizes and dimensions are approximate. See sales manager for specifics relating to your home and homesite.

# MAYFIELD LOWER LEVEL



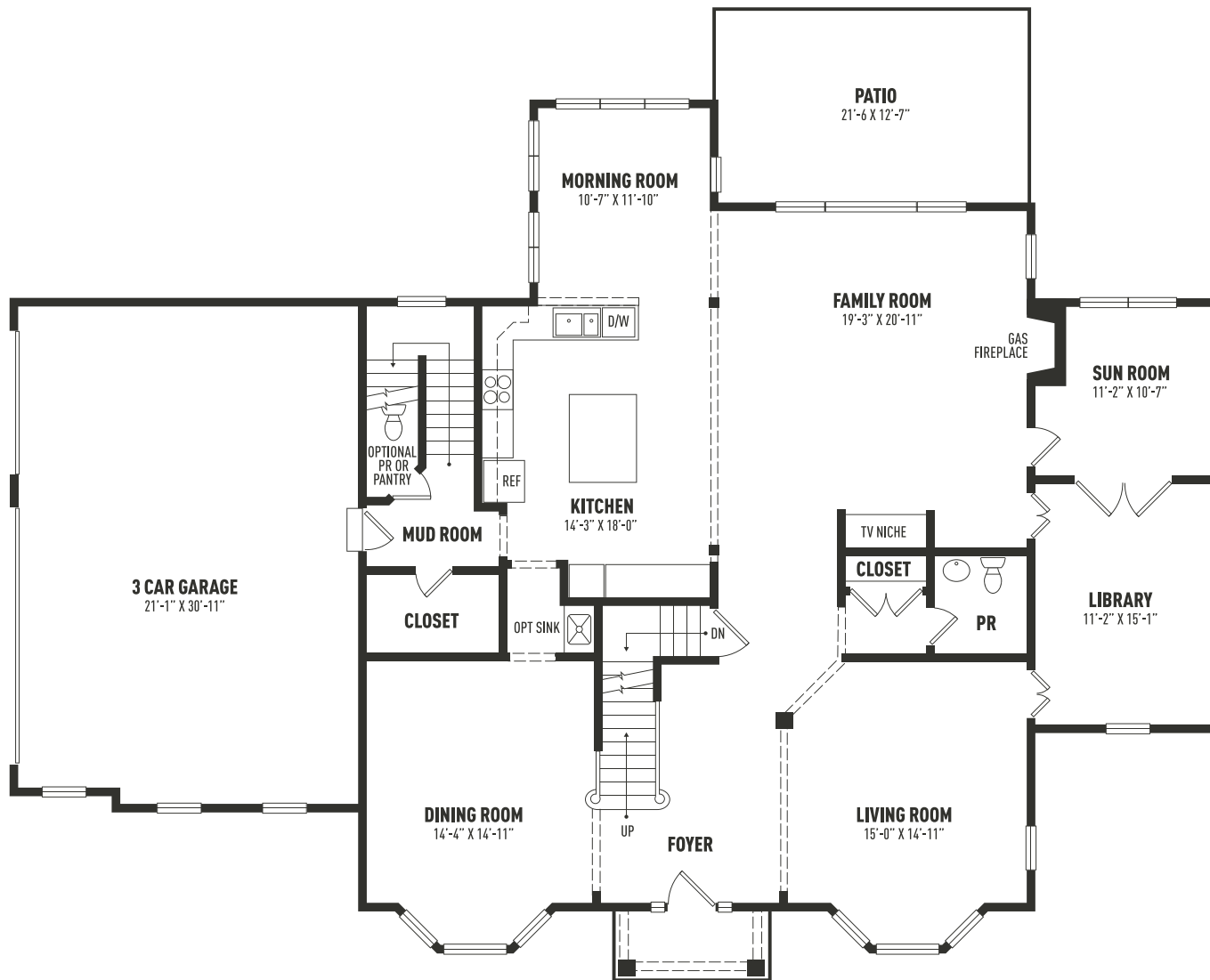
*Sketches and illustrations are artist's renderings only. Details, dimensions and colors are subject to change and field variations. All sizes and dimensions are approximate. See sales manager for specifics relating to your home and homesite.*



### **Elm Model**

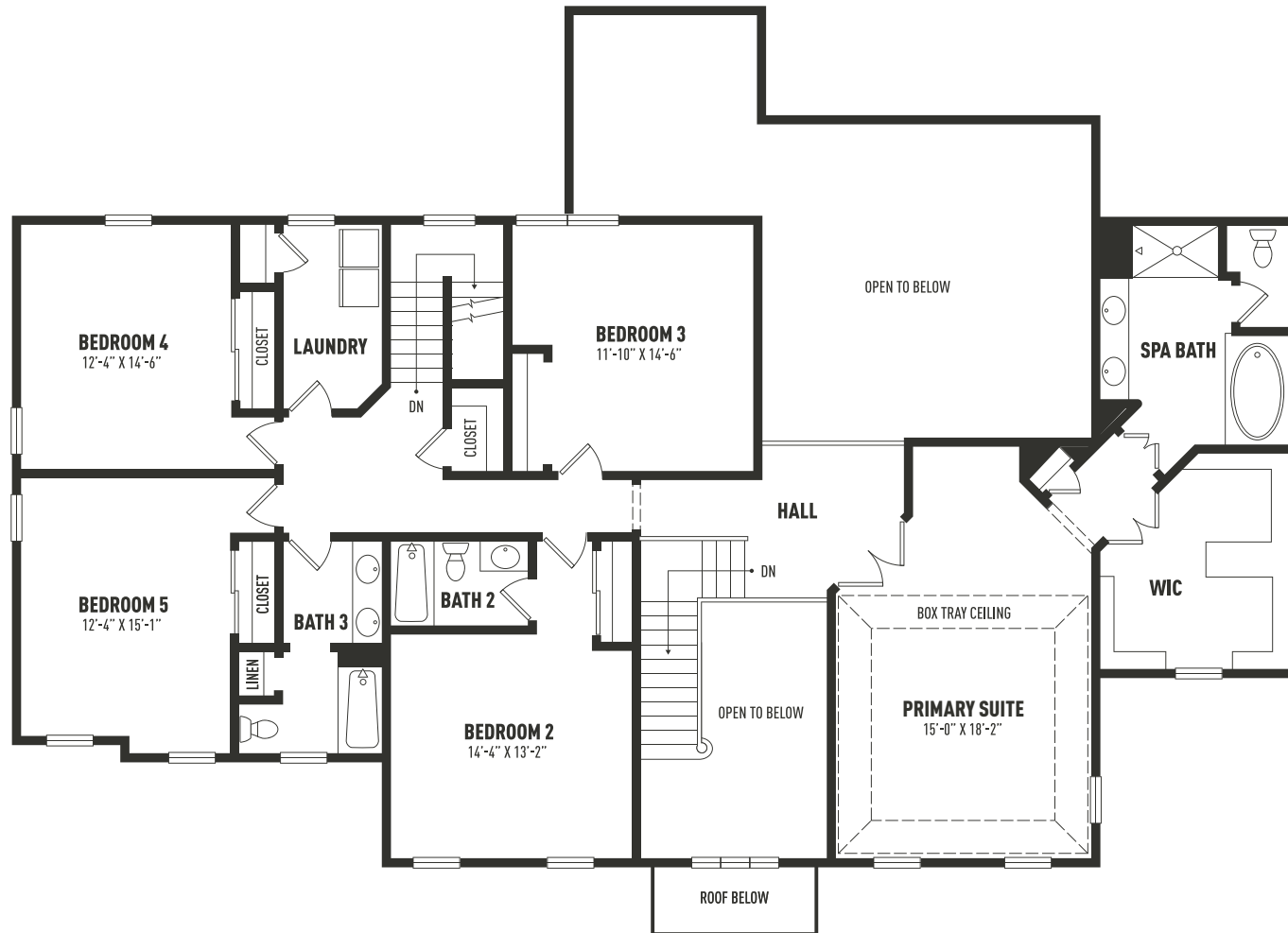
The 4,242 SF Elm model features 5 bedrooms, 3 full baths, and a 3-car garage. The home combines a classic center hall design leading to an expansive island kitchen opening to a window wrapped morning room and spacious two-story family room. A sunroom and library flank the family room and living room.

ELM  
FIRST FLOOR



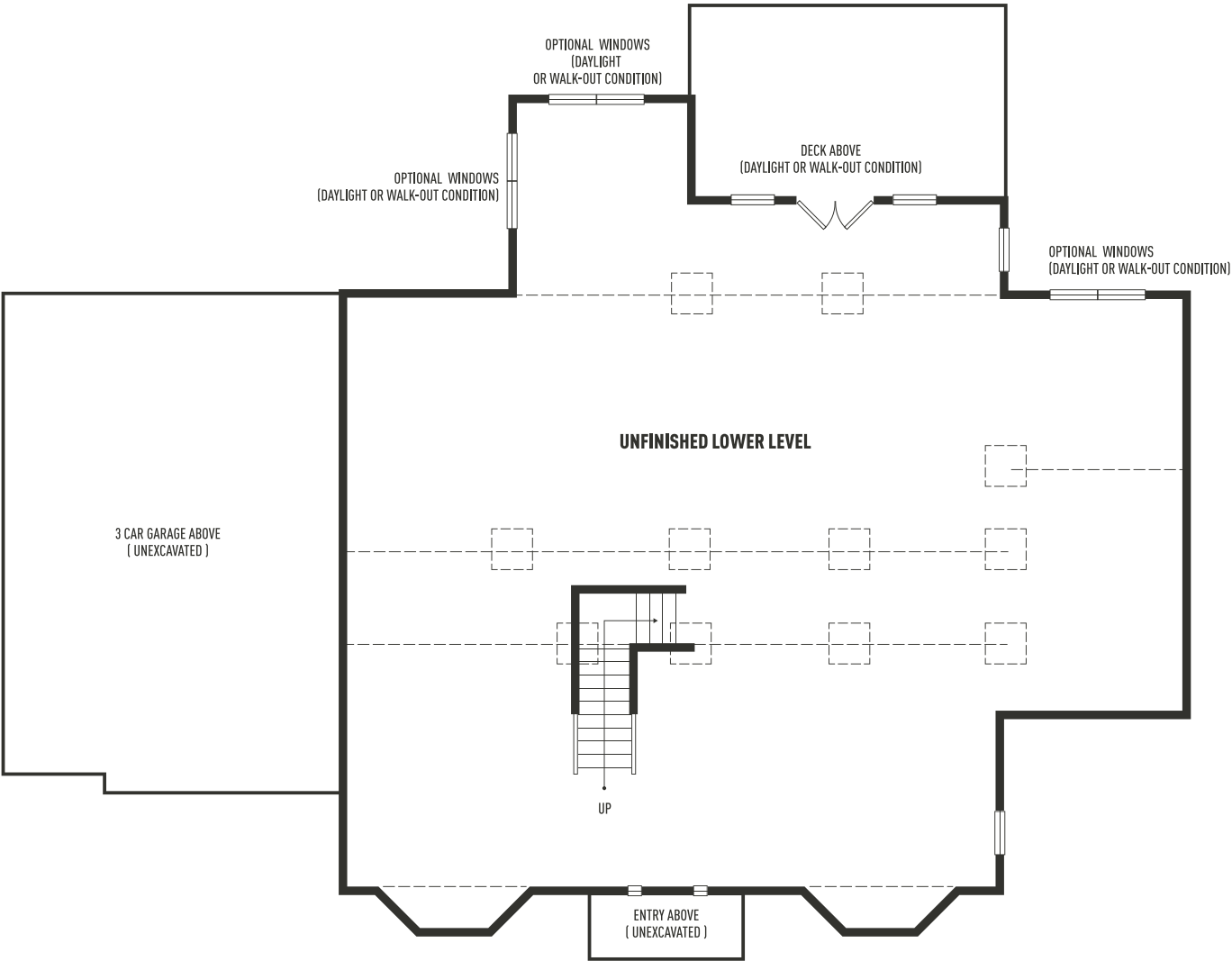
*Sketches and illustrations are artist's renderings only. Details, dimensions and colors are subject to change and field variations. All sizes and dimensions are approximate. See sales manager for specifics relating to your home and homesite.*

ELM  
SECOND FLOOR



*Sketches and illustrations are artist's renderings only. Details, dimensions and colors are subject to change and field variations. All sizes and dimensions are approximate. See sales manager for specifics relating to your home and homesite.*

# ELM LOWER LEVEL



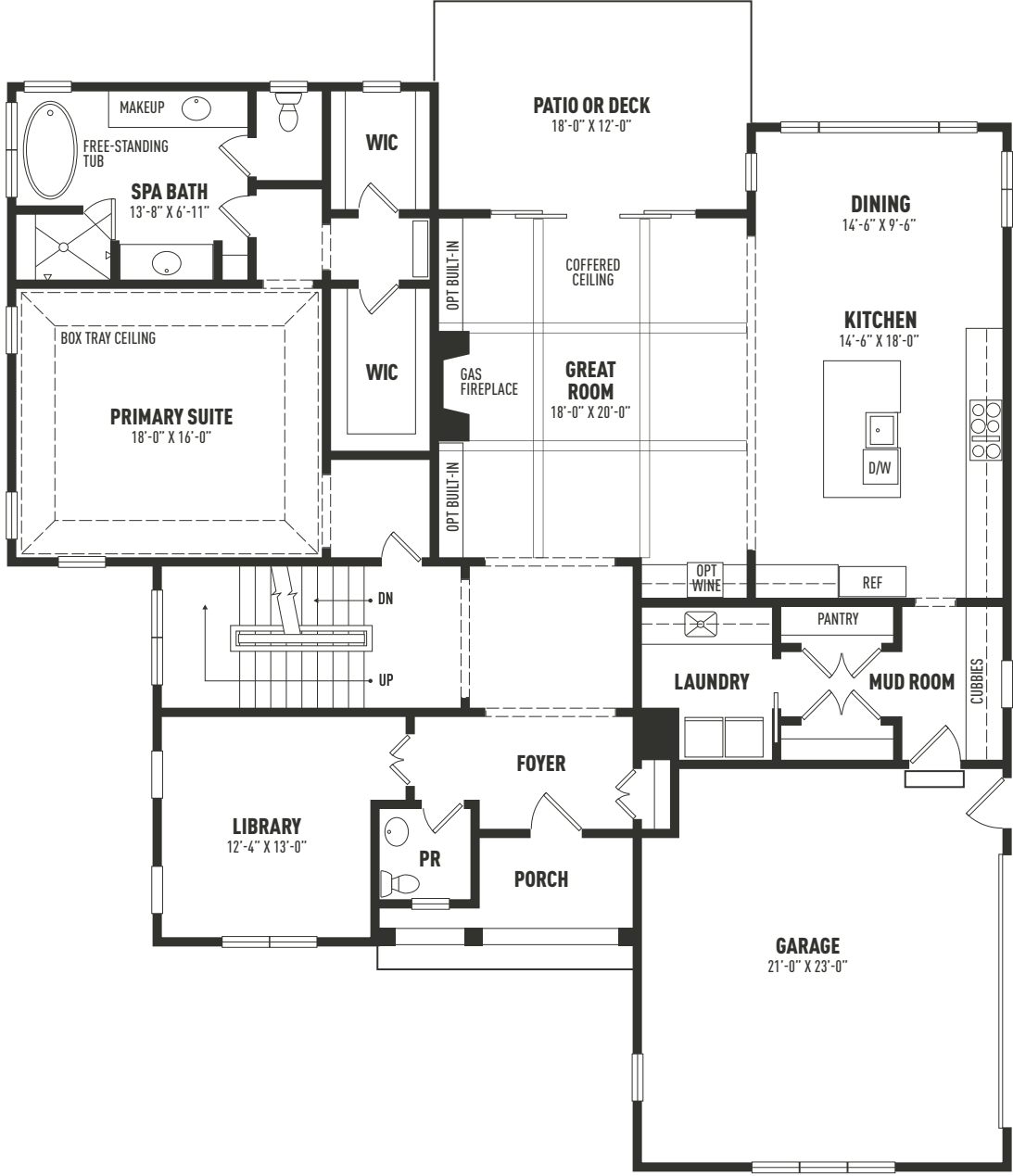
*Sketches and illustrations are artist's renderings only. Details, dimensions and colors are subject to change and field variations. All sizes and dimensions are approximate. See sales manager for specifics relating to your home and homesite.*



### **Baldwin Model**

The new Baldwin design offers a seamless one level lifestyle embracing Bentley Homes' reputation for sophisticated, elegant and comfortable living. The spacious foyer leads to an expansive great room with coffered ceiling, flanking an open kitchen dining area bathed in natural light. Steps away the owner's suite with spa bath provides a secluded retreat. Guests are welcome as the Baldwin's inviting second floor offers three bedrooms and two full baths.

BALDWIN  
FIRST FLOOR



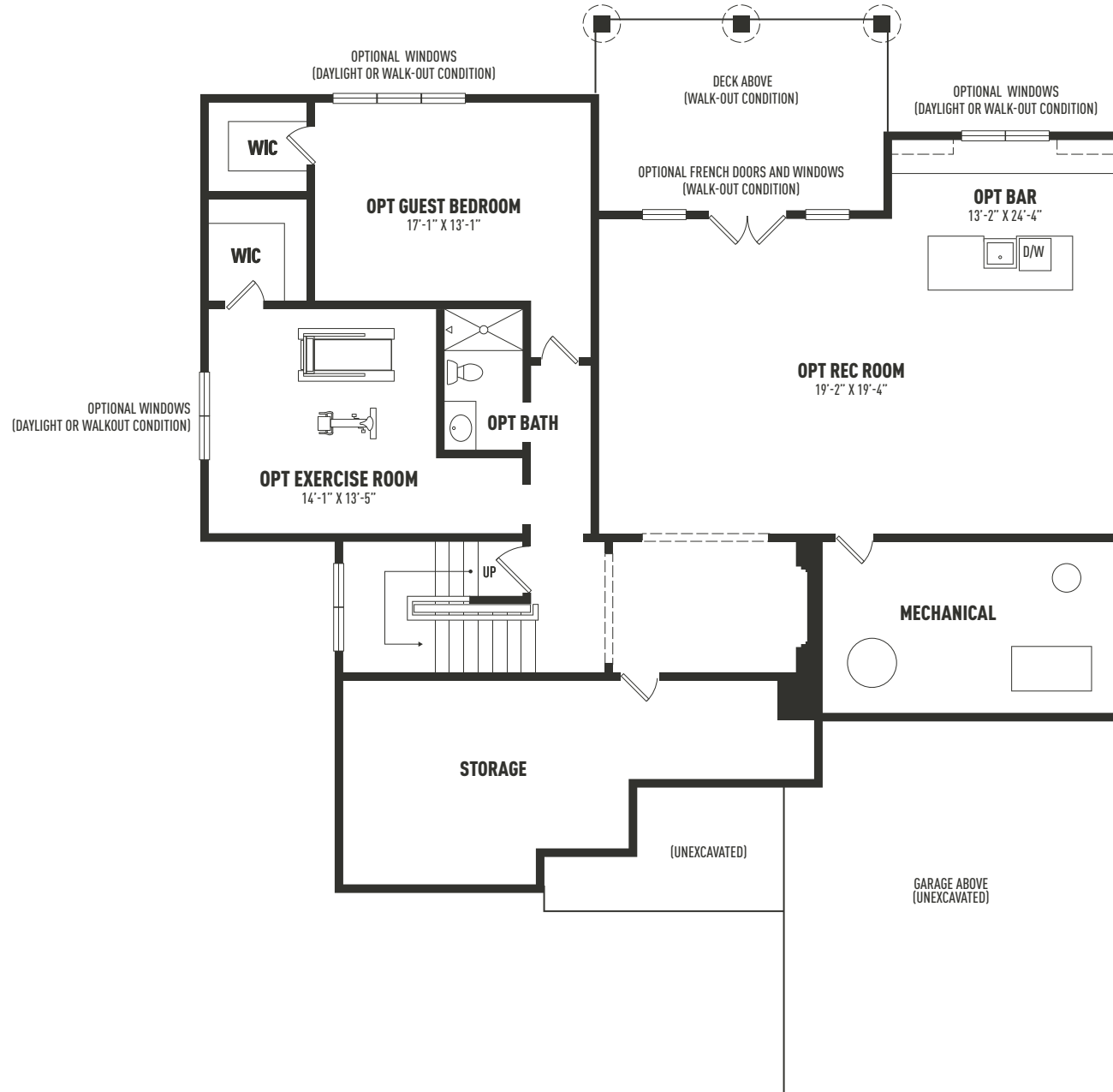
Sketches and illustrations are artist's renderings only. Details, dimensions and colors are subject to change and field variations. All sizes and dimensions are approximate. See sales manager for specifics relating to your home and homesite.

# BALDWIN SECOND FLOOR



*Sketches and illustrations are artist's renderings only. Details, dimensions and colors are subject to change and field variations. All sizes and dimensions are approximate. See sales manager for specifics relating to your home and homesite.*

# BALDWIN LOWER LEVEL



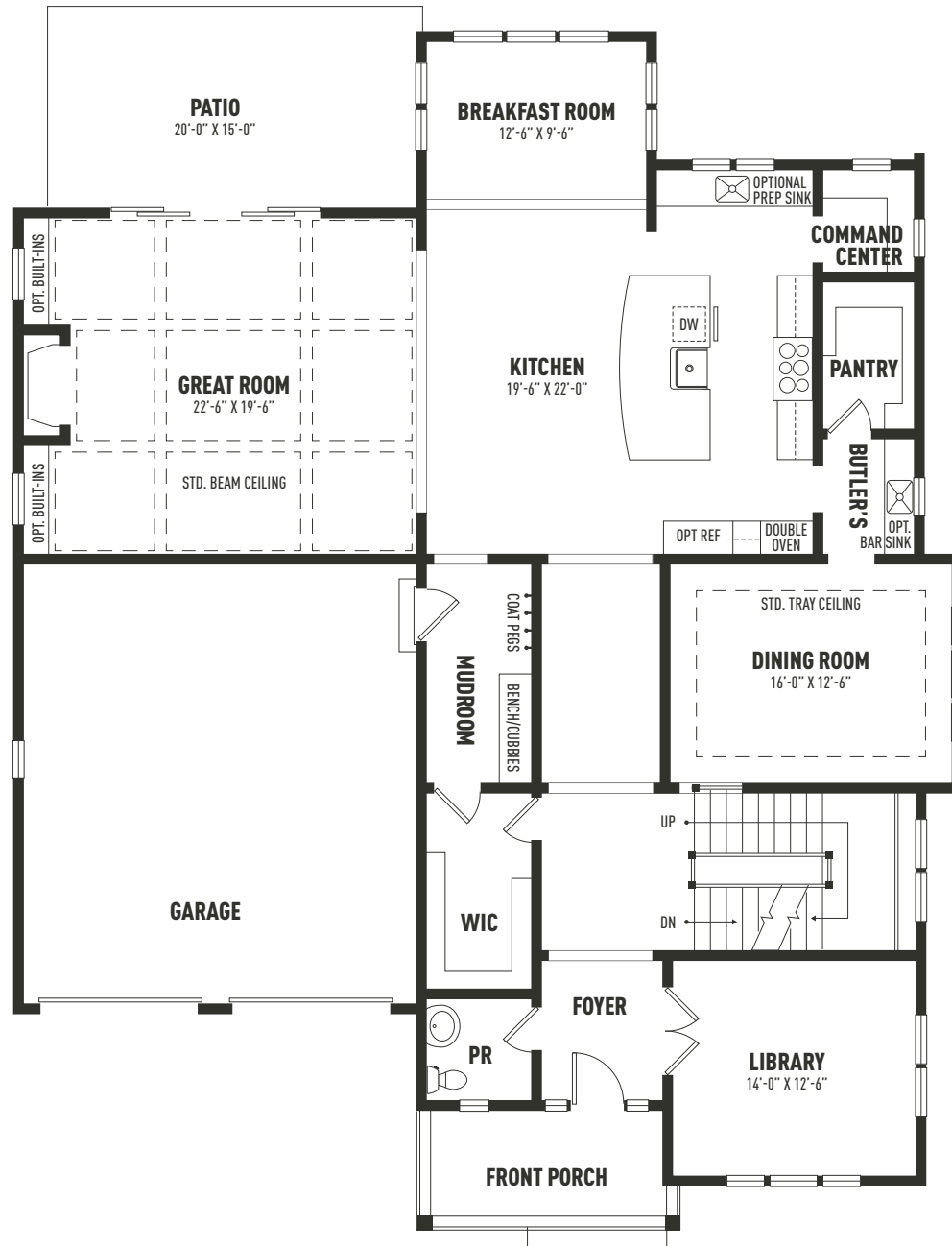
*Sketches and illustrations are artist's renderings only. Details, dimensions and colors are subject to change and field variations. All sizes and dimensions are approximate. See sales manager for specifics relating to your home and homesite.*



### **Iven Model**

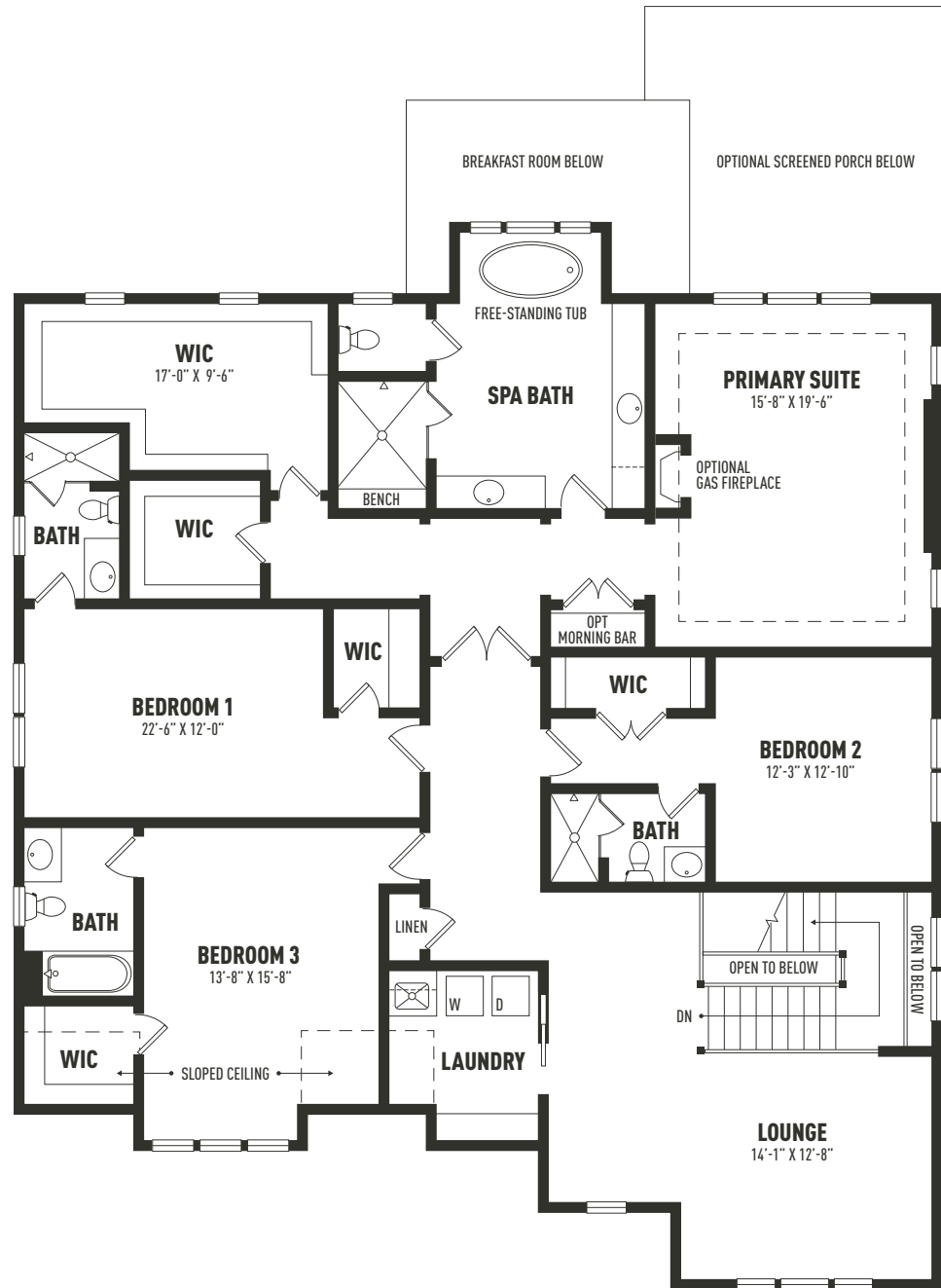
The Iven is a brand-new Bentley Homes' design featuring 4,741 sq. ft. of living space with an open sophisticated first floor layout and high-end finishes throughout. The second floor features an owner's suite with a luxurious spa bath, three additional bedrooms with en-suite baths and a spacious lounge area.

# IVEN FIRST FLOOR



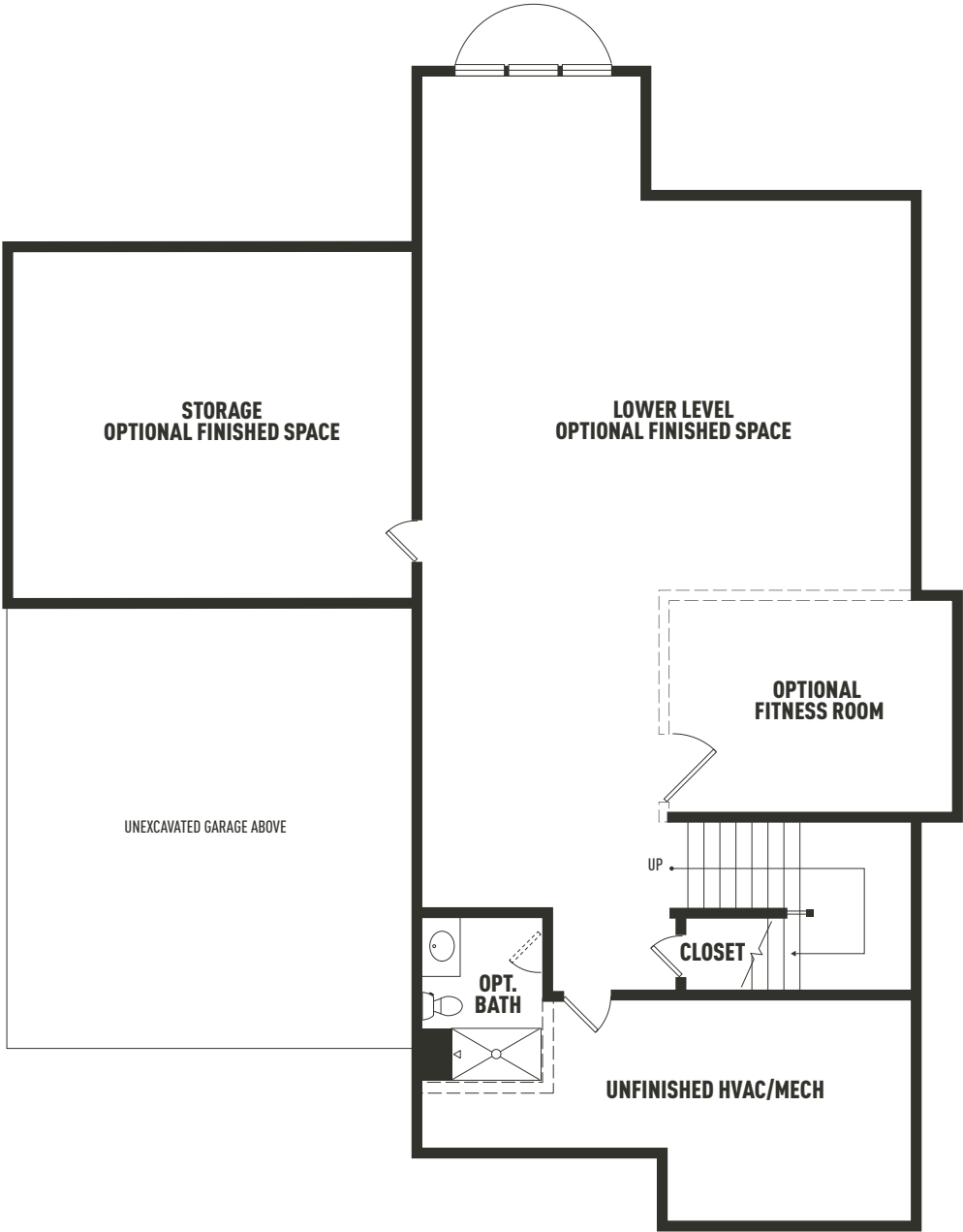
*Sketches and illustrations are artist's renderings only. Details, dimensions and colors are subject to change and field variations. All sizes and dimensions are approximate. See sales manager for specifics relating to your home and homesite.*

# IVEN SECOND FLOOR



*Sketches and illustrations are artist's renderings only. Details, dimensions and colors are subject to change and field variations. All sizes and dimensions are approximate. See sales manager for specifics relating to your home and homesite.*

IVEN  
LOWER LEVEL



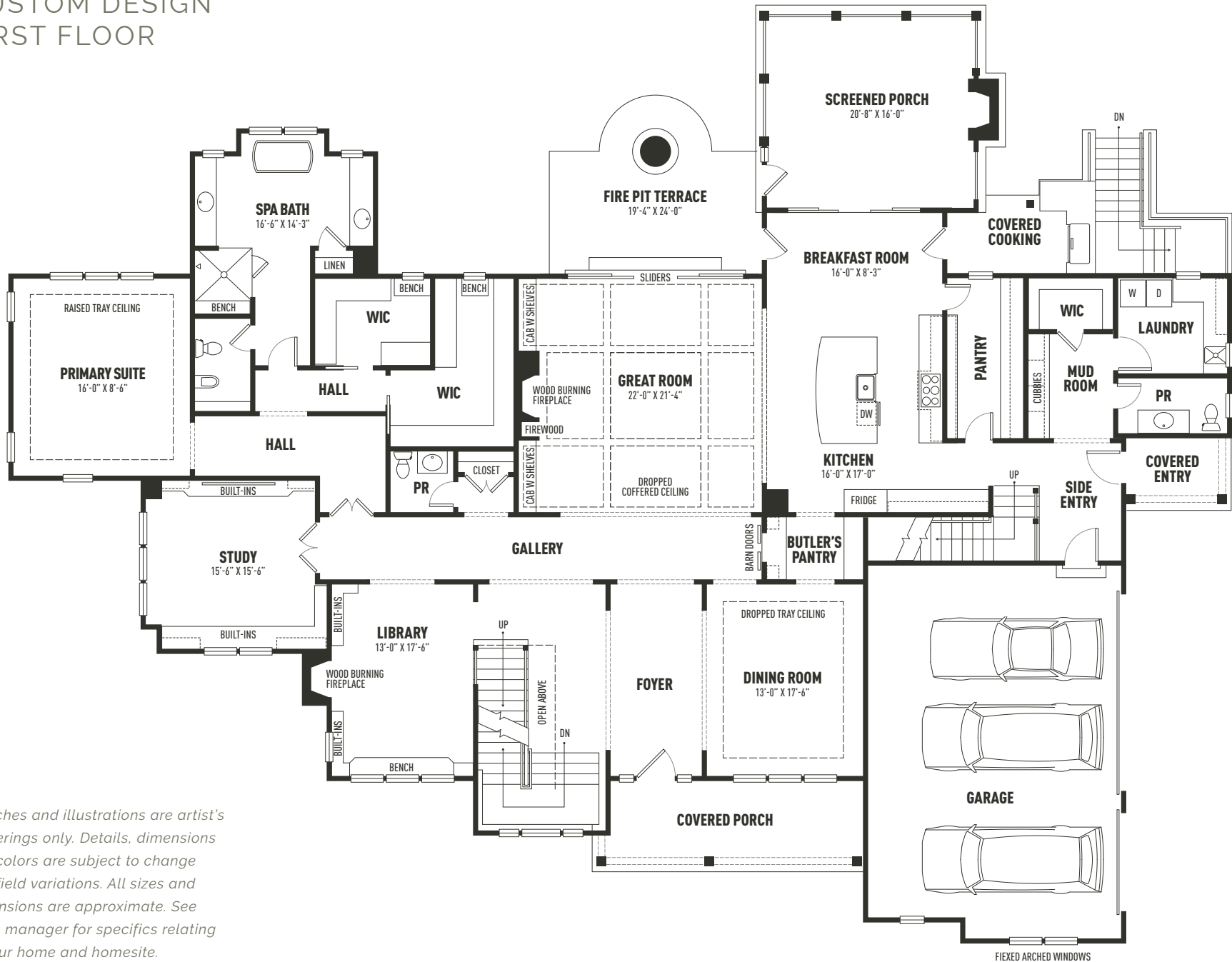
*Sketches and illustrations are artist's renderings only. Details, dimensions and colors are subject to change and field variations. All sizes and dimensions are approximate. See sales manager for specifics relating to your home and homesite.*



### **Custom Design**

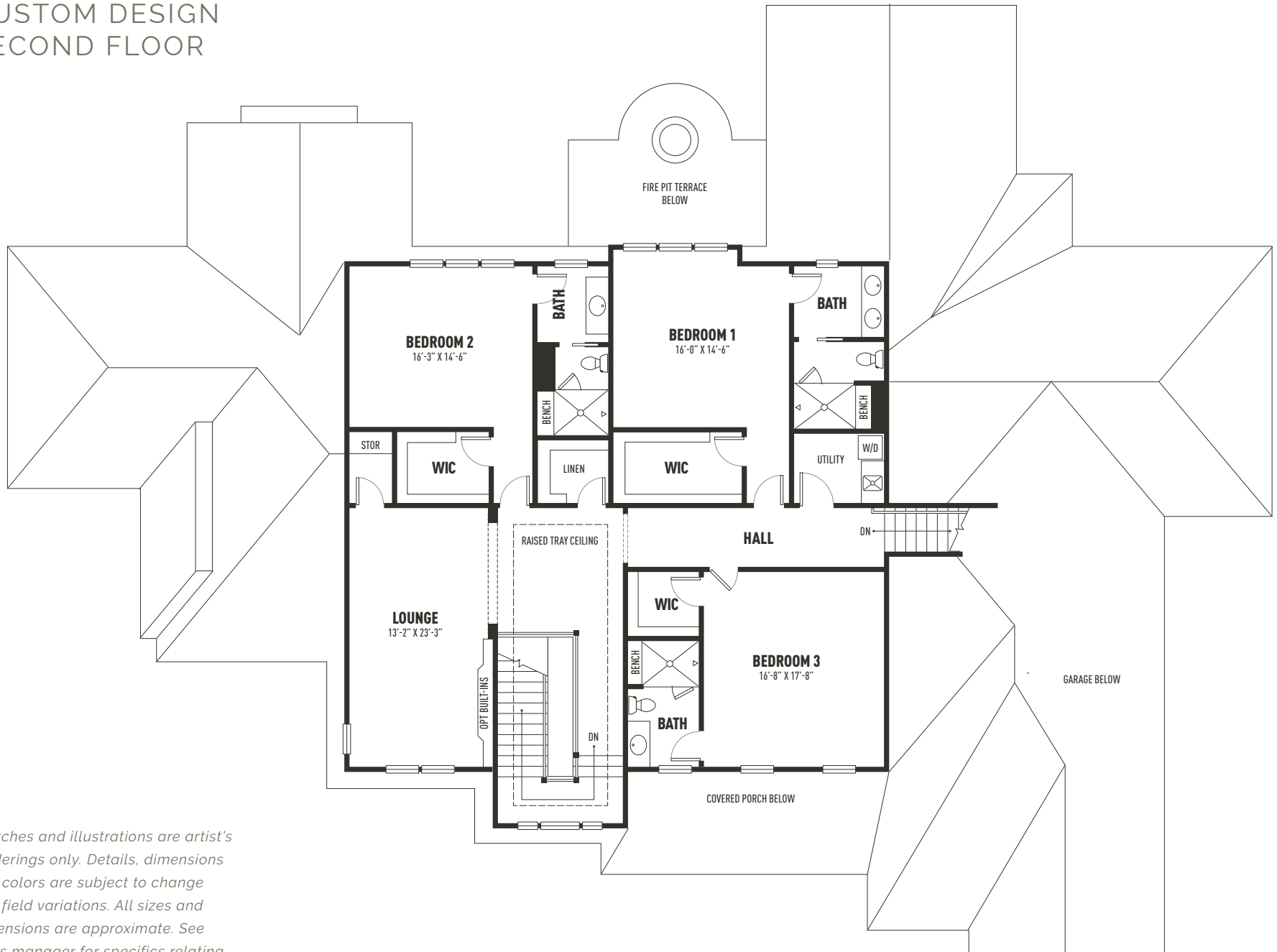
This custom design built by Bentley Homes features 4 bedrooms, 4 full baths and three powder rooms. The home includes 6,465 square feet of living space on the first and second levels with an additional 2,600 square feet finished in the lower level. Designed for elegant and comfortable one level living with an expansive first floor primary suite, the home also has three ensuite bedrooms and a spacious lounge on the second floor.

# CUSTOM DESIGN FIRST FLOOR



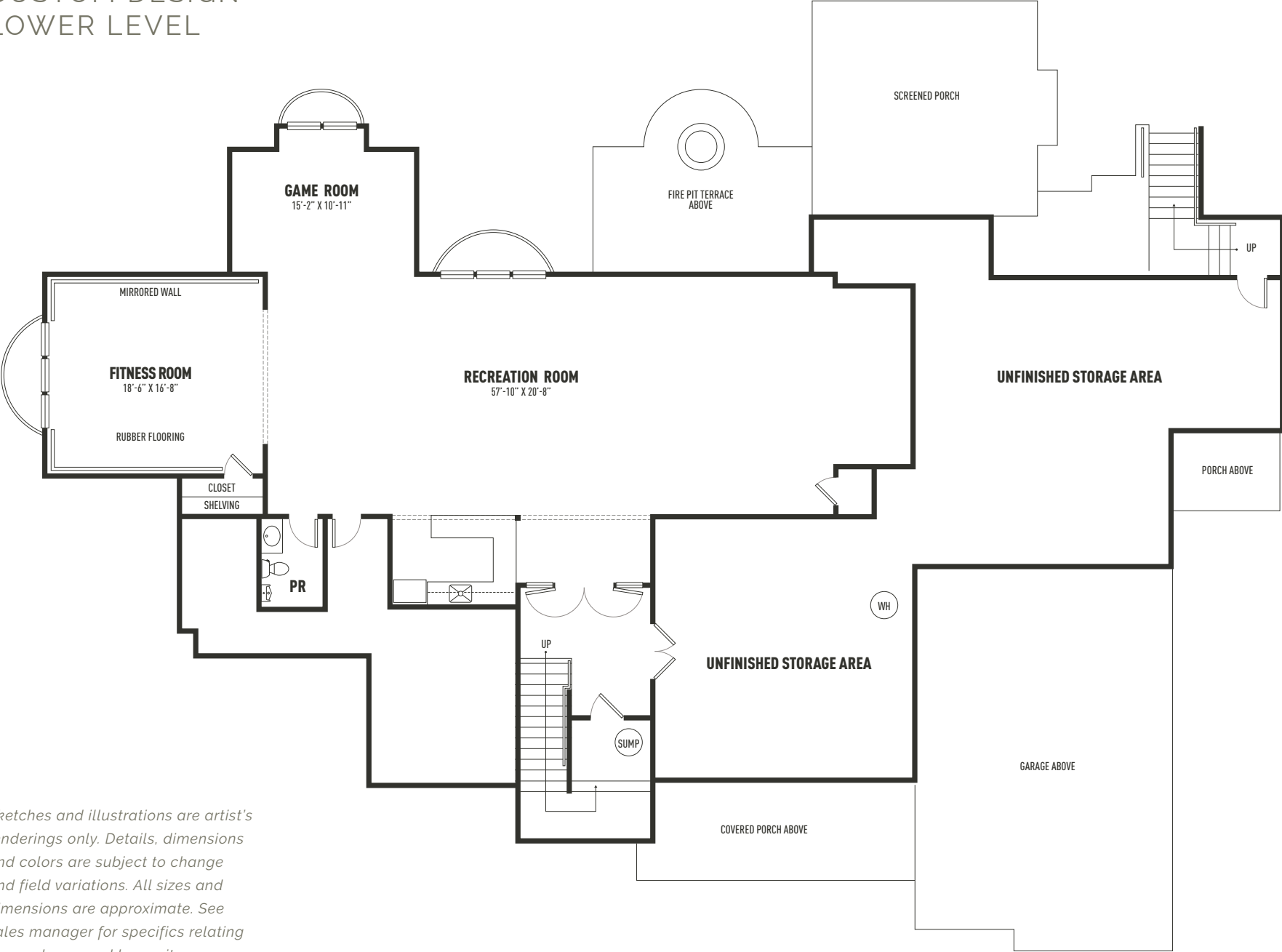
*Sketches and illustrations are artist's renderings only. Details, dimensions and colors are subject to change and field variations. All sizes and dimensions are approximate. See sales manager for specifics relating to your home and homesite.*

# CUSTOM DESIGN SECOND FLOOR

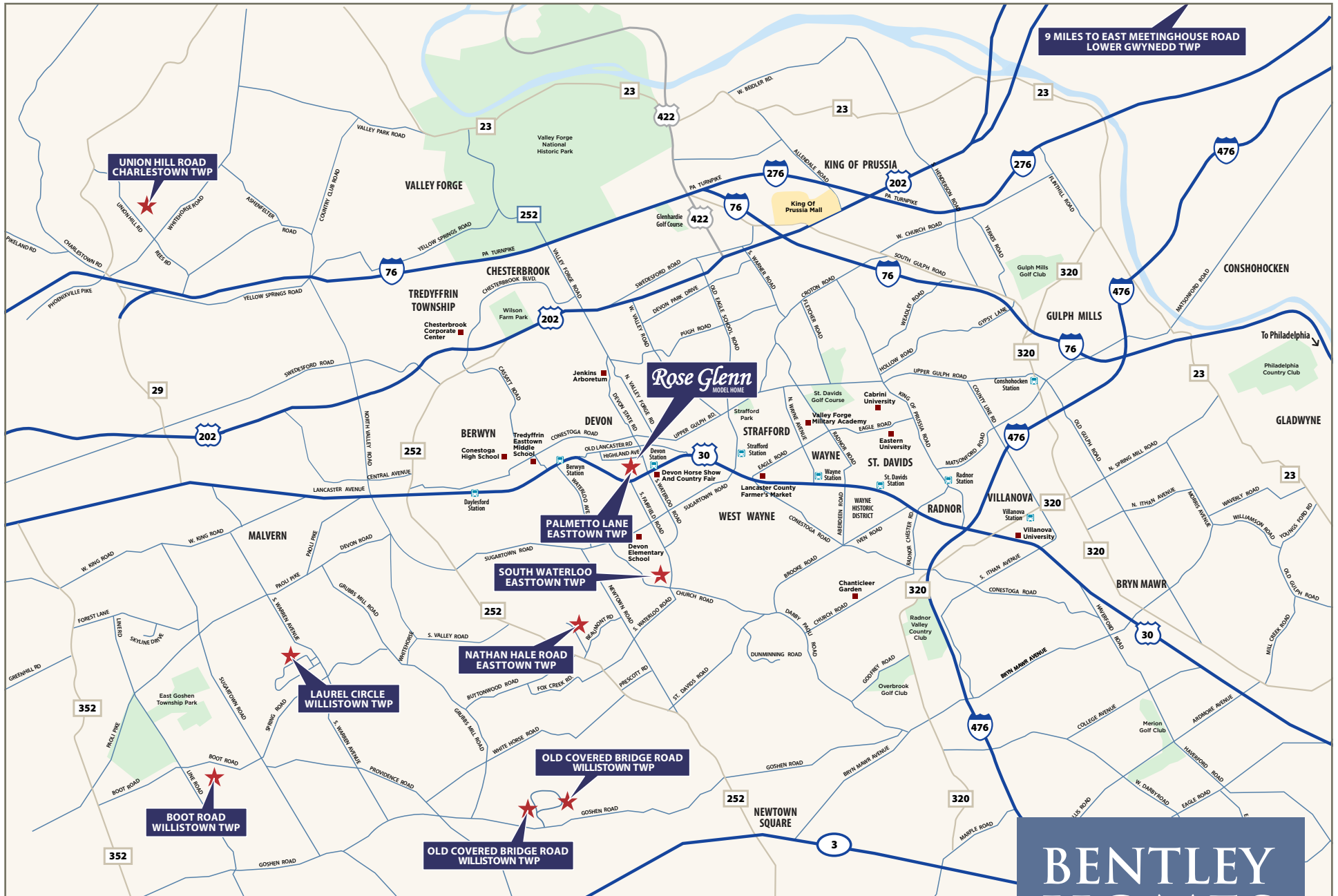


*Sketches and illustrations are artist's renderings only. Details, dimensions and colors are subject to change and field variations. All sizes and dimensions are approximate. See sales manager for specifics relating to your home and homesite.*

# CUSTOM DESIGN LOWER LEVEL



Sketches and illustrations are artist's renderings only. Details, dimensions and colors are subject to change and field variations. All sizes and dimensions are approximate. See sales manager for specifics relating to your home and homesite.



FOR ADDITIONAL INFORMATION

Please Contact Nicole Rymer 610.553.3530

NRymer@bentleyhomes.com | visit [www.bentleyhomes.com](http://www.bentleyhomes.com)

