

---

10 LAUREL CIRCLE, MALVERN, PA 19355  
A Bentley Custom Design

---



BentleyHomes.com



10 Laurel Circle, Malvern, PA 19355

Model: Atlee D Elevation  
Square Footage: 4,346  
4 Bedrooms | 3.5 Baths | 3 Car Garage  
Acreage: 2.1



10 Laurel Circle, Malvern, PA 19355



10 Laurel Circle, Malvern, PA 19355

## SIGNATURE APPOINTMENTS

10 Laurel Circle, Malvern, PA 19355

*At Bentley Homes we create homes with trendsetting architecture, elevated finishes and a comfortable, relaxed lifestyle. Your home is your sanctuary..*

### LOCATION

- Great location in Willistown Township near Willisbrook Preserve, East Goshen and Applebrook Parks
- Renowned Great Valley School District

### ARCHITECTURAL

- Design by nationally acclaimed architects
- Custom elevation
- Open, airy floorplan with a traditional feel  
4 bedrooms, 3 baths & powder room,  
expandable and customizable
- 42" Therma-Tru 2/3 glass front door
- Spacious library with 12-lite French doors
- Three car garage
- Great room with coffered ceiling & gas fireplace
- 6.5" wide-plank engineered wood flooring
- Classic 2-panel solid core interior doors
- Main staircase with stained white oak stair treads & handrails; painted newel posts, baluster & risers
- Oversized 7 ¼" baseboard trim

- Built-in cubbies in mudroom
- Covered flagstone patio
- Abundant closet space with melamine shelving and rod
- Daylight lower level with twin and triple windows

### KITCHEN

- Professionally designed layout with 42" Century Carriage House soft close cabinets
- Quartz or granite countertops with 3"x 6" DalTile Rittenhouse Square subway backsplash
- Kohler farmhouse sink with Signature Hardware Ridgeway faucet in polished chrome
- Oversized island
- Luxury appliances including:  
Thermador French door refrigerator  
Bosch 36" gas range  
Thermador panel ready dishwasher  
Bosch microwave drawer  
XO chimney exhaust hood  
InSinkErater garbage disposal
- Pantry storage & butler's pantry with XO beverage center

## SIGNATURE APPOINTMENTS

10 Laurel Circle, Malvern, PA 19355

### BATHS

- Formal powder room with Kohler Memoirs pedestal sink and Signature Hardware widespread faucet in polished chrome
- Spacious and luxurious spa bath featuring:  
Signature Hardware 8" widespread faucet in polished chrome  
Separate commode room  
Free standing soaking tub and floor mount tub filler  
Large shower with frameless shower door and mosaic tile floor
- All secondary baths feature:  
Quartz or granite countertops  
Century Carriage House vanities with soft close drawers  
12" x 12" floor tiles, with 10 x 14" wall tiles  
Kohler Highline toilets
- Rough-in plumbing for full bath in lower level

### UTILITIES / CONSTRUCTION

- 92% high efficiency gas heater
- 75-gallon gas hot water heater
- 13-SEER A/C
- 400 AMP service
- Well and septic
- Propane gas
- Energy efficient construction:  
Poured concrete foundation  
Insulated garage doors
- Viwinco double hung windows
- James Hardie cement board siding
- Underground electric, telephone and cable TV

## THE BENTLEY DIFFERENCE

For 50 years, the Bentley name has been synonymous with design excellence and superior quality construction.

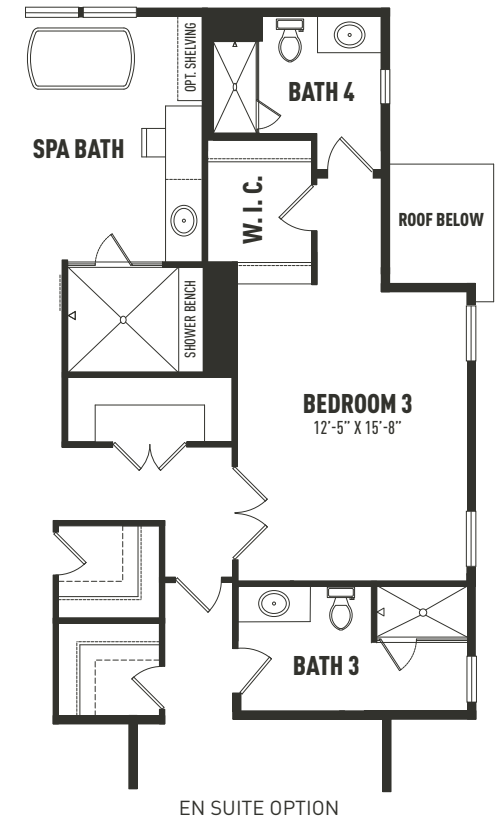
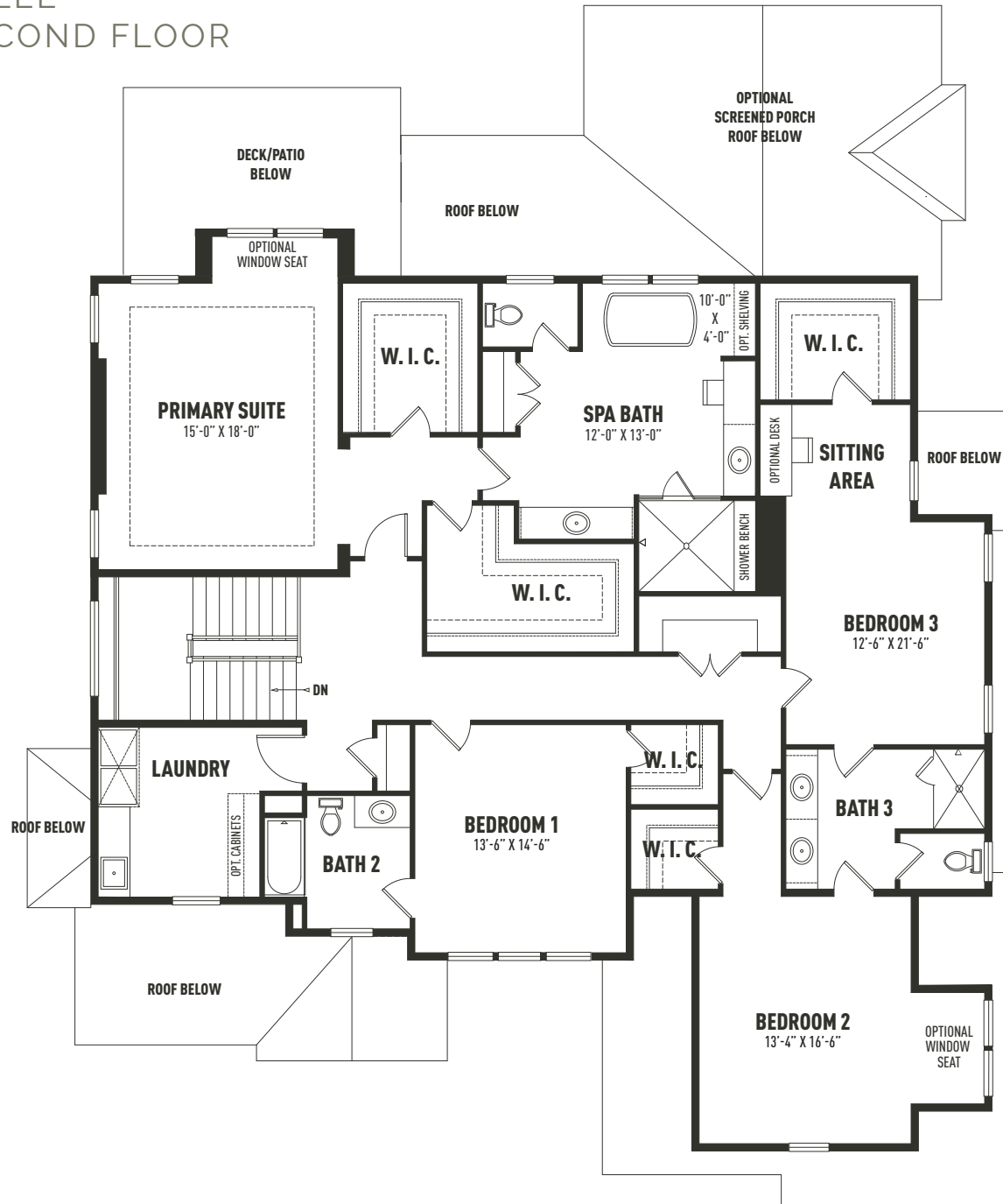
Personalize your home to perfection from a curated designer collection of options and upgrades

# ATLEE FIRST FLOOR



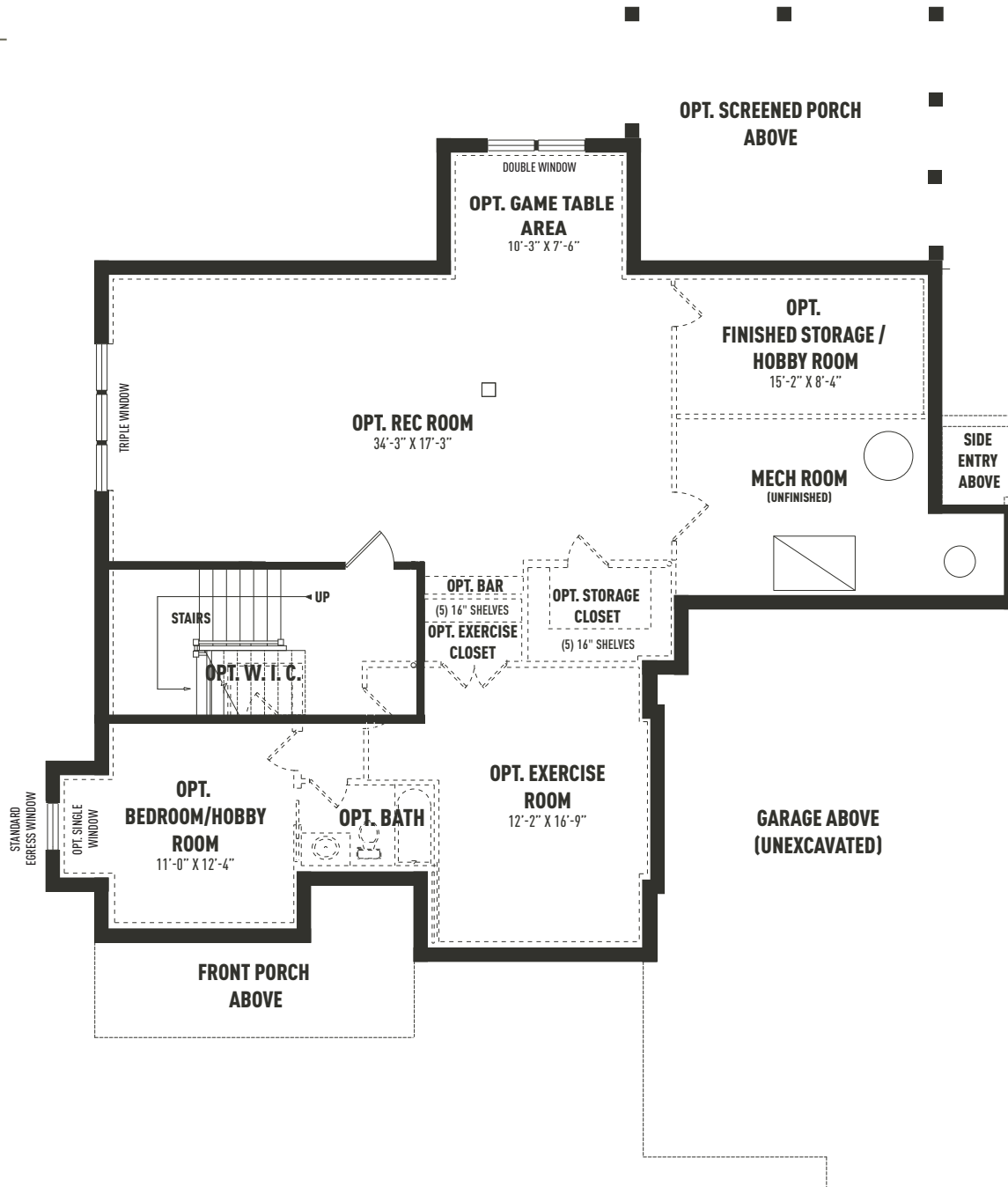
*Sketches and illustrations are artist's renderings only. Details, dimensions and colors are subject to change and field variations. All sizes and dimensions are approximate. See sales manager for specifics relating to your home and homesite.*

# ATLEE SECOND FLOOR



Sketches and illustrations are artist's renderings only. Details, dimensions and colors are subject to change and field variations. All sizes and dimensions are approximate. See sales manager for specifics relating to your home and homesite.

# ATLEE LOWER LEVEL

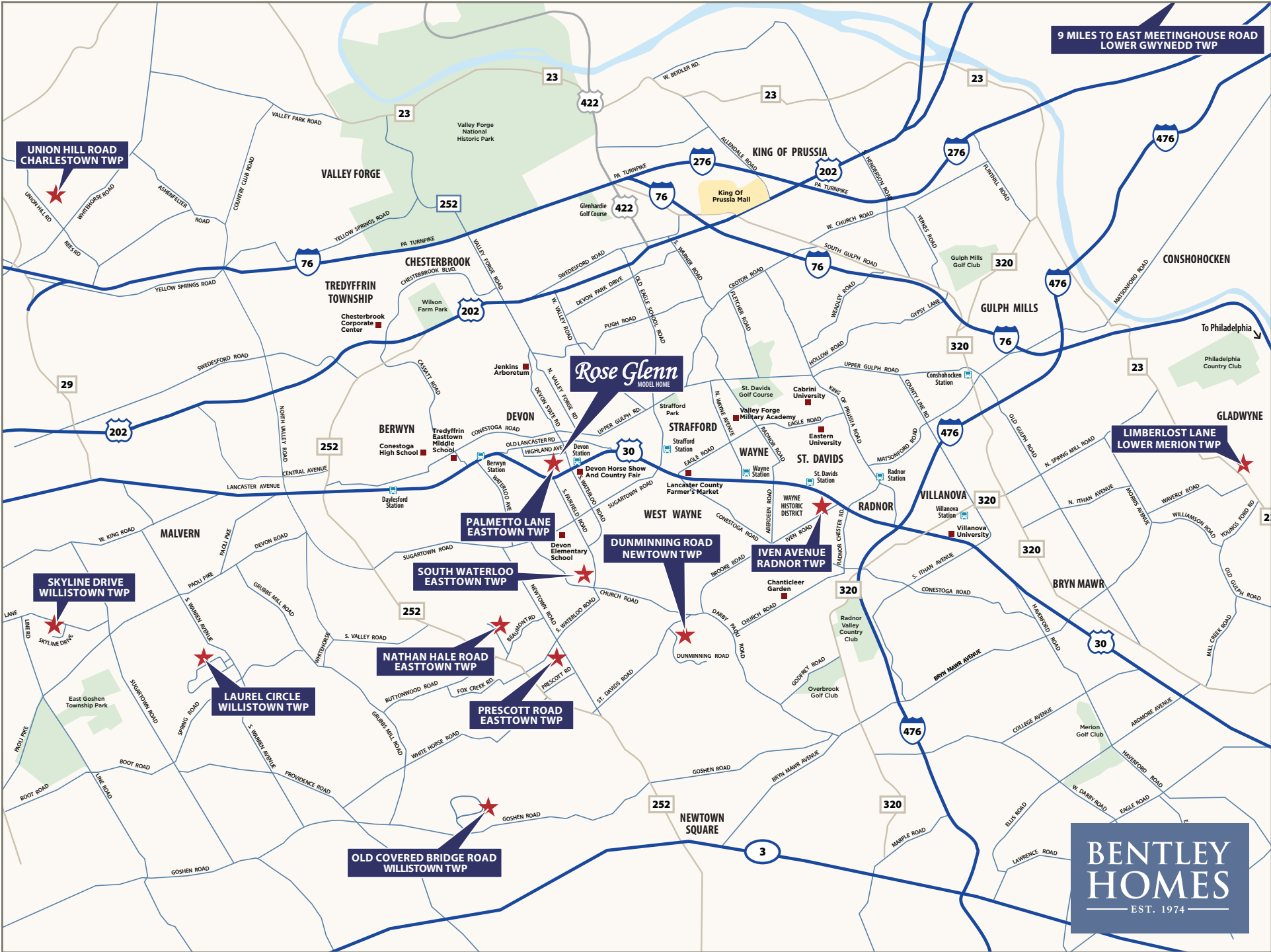


Sketches and illustrations are artist's renderings only. Details, dimensions and colors are subject to change and field variations. All sizes and dimensions are approximate. See sales manager for specifics relating to your home and homesite.



10 Laurel Circle, Malvern, PA 19355  
Acreage: 2.1





9 MILES TO EAST MEETINGHOUSE ROAD  
LOWER GWYNEDD TWP

UNION HILL ROAD  
CHARLESTOWN TWP

Rose Glenn  
MODEL HOME

LIMBERLOST LANE  
LOWER MERION TWP

SKYLINE DRIVE  
WILLISTOWN TWP

PALMETTO LANE  
EASTTOWN TWP

DUNMINNING ROAD  
NEWTOWN TWP

IVEN AVENUE  
RADNOR TWP

SOUTH WATERLOO  
EASTTOWN TWP

NATHAN HALE ROAD  
EASTTOWN TWP

PRESCOTT ROAD  
EASTTOWN TWP

LAUREL CIRCLE  
WILLISTOWN TWP

OLD COVERED BRIDGE ROAD  
WILLISTOWN TWP

**BENTLEY  
HOMES**  
EST. 1974

— AVAILABLE CUSTOM HOMES —

ADDRESS	ACRE	FLOOR PLAN	SQ. FT. APPROX.	STATUS	PRICE TO DATE	EST. DELIVERY
10 Laurel Circle Malvern, PA 19355	2.1	Atlee Custom	4,346	<b>RESERVED</b>	*\$2,659,927	Summer 2026

\* Includes lot premium and options selected to date.



**FOR ADDITIONAL INFORMATION**

Please contact: Bill McGarrigle 484-874-4777  
[Bill@billmcgarrigleteam.com](mailto:Bill@billmcgarrigleteam.com) | visit [bentleyhomes.com](http://bentleyhomes.com)

*Please contact Bill McGarrigle for individual floor plan and homesite specifics. All square footage calculations are approximate. Information & pricing subject to change at any time without notice 4/20/26.*



— AVAILABLE CUSTOM HOMES —

ADDRESS	ACRE	FLOOR PLAN	SQ. FT. APPROX.	STATUS	PRICE TO DATE	EST. DELIVERY
2110 Union Hill Road Malvern, PA 19335	2.2	Atlee Custom	5,204	Available	*\$2,299,900	Immediately
104 Palmetto Lane Devon, PA 19333	0.50	Atlee Custom	4,346	Available	*\$2,786,230	Immediately
105 Palmetto Lane Devon, PA 19333	0.51	Atlee Custom	4,346	<b>SOLD</b>	*\$2,501,691	Spring 2026
837 Nathan Hale Road Berwyn, PA 19312	1.0	Chandler Custom	5,235	<b>SOLD</b>	*\$2,849,900	Fall 2026
718 South Waterloo Road Devon, PA 19333	1.0	Chandler Custom	5,235	Available	*\$3,179,900	Fall 2026
1344 East Meetinghouse Road Amler, PA 19002	1.5	Iven II Custom	5,044	Available	*\$2,187,900	Winter 2026
39 Old Covered Bridge Road Newtown Square, PA 19073	5.0	Chandler Custom	5,235	<b>RESERVED</b>	*\$3,129,900	Winter 2026



**FOR ADDITIONAL INFORMATION**

Please contact: Art Herling 215-431-3944 (mobile) | [Art@Howardhanna.com](mailto:Art@Howardhanna.com)  
 Nicole Rymer 610-553-3530 | [NRymer@bentleyhomes.com](mailto:NRymer@bentleyhomes.com) | visit [bentleyhomes.com](http://bentleyhomes.com)

*Please contact Art Herling or Nicole Rymer for individual floor plan and homesite specifics. All square footage calculations are approximate. Information & pricing subject to change at any time without notice 4/20/26.*



**HOWARD  
HANNA**  
REAL ESTATE SERVICES

— ROSE GLENN MODELS —

MODEL	SQUARE FOOTAGE	BASE PRICE
Logan	3,685	\$2,299,900
Baldwin	4,039	\$2,349,900
Atlee	4,346	\$2,399,900

— ROSE GLENN SPEC HOME —

ADDRESS & HOMESITE #	ACRE	FLOOR PLAN	SQ. FT.	STATUS	PRICE TO DATE	EST. DELIVERY
104 Palmetto Lane, Devon, PA 19333   #3	0.50	Atlee Custom	4,346±	Available	*\$2,786,230	Immediately

\* Includes lot premium and options selected to date.

— ROSE GLENN HOMESITES —

HOMESITE #	ACRE	PREMIUM
1	0.60	-\$100,000-
2	0.52	Model Home
3	0.50	Spec Home
4	0.53	<b>SOLD</b>
5	0.58	<b>SOLD</b>

— ROSE GLENN HOMESITES —

HOMESITE #	ACRE	PREMIUM
6	0.80	<b>SOLD</b>
7	0.55	-\$0-
8	0.51	<b>SOLD</b>
9	0.48	-\$15,000-
10	0.75	Unavailable



**FOR ADDITIONAL INFORMATION**

Please contact: Nicole Rymer 610-553-3530  
[NRymer@bentleyhomes.com](mailto:NRymer@bentleyhomes.com) | visit [bentleyhomes.com](http://bentleyhomes.com)

*Please contact Nicole Rymer for individual floor plan and homesite specifics. All square footage calculations are approximate. Information & pricing subject to change at any time without notice 4/20/26.*

