
OLD COVERED BRIDGE ROAD, NEWTOWN SQUARE, PA 19073
A Bentley Custom Design



BentleyHomes.com



Old Covered Bridge Road, Newtown Square, PA 19073

Model: Chandler Custom
Square Footage: 5,235
Acreage: 2.0

Old Covered Bridge Road, Newtown Square, PA 19073



Home shown includes optional screened porch, lower level patio and oversized deck

SIGNATURE APPOINTMENTS

Old Covered Bridge Road, Newtown Square, PA 19073

At Bentley, we create homes with trendsetting architecture, high end finishes and a comfortable, relaxed lifestyle. Your home is your sanctuary.

LOCATION

- Idyllic setting in beautiful Willistown Township

ARCHITECTURAL

- Plans by nationally acclaimed architects
- Open, airy beautifully designed floor plan offering 4 bedrooms with 3 full baths and 2 half baths
- Walk-out lower level
- Gas fireplace
- 6.5" wide-plank engineered wood flooring
- Classic 2-panel solid core interior doors
- Coffered ceiling in family room
- Main staircase with white oak stair treads & handrails; painted newel posts, baluster & risers
- Oversized 7 ¼" baseboard trim
- Abundant closet space
- Built-in cubbies in mudroom
- Composite deck

KITCHEN

- Professionally designed layout with Century Carriage House soft close cabinets
- Granite or quartz countertops with 3"x 6" DalTile "Rittenhouse Square" staggered subway tile backsplash
- Enormous island with large stainless-steel sink and Kohler Simplice single lever faucet with pull-out spray in polished chrome
- Luxury appliances including:
 - stainless steel double wall oven
 - Wolf 36" six-burner gas range top
 - stainless steel dishwasher
 - stainless steel microwave drawer
- Pantry storage and butler's pantry

SIGNATURE APPOINTMENTS

Old Covered Bridge Road, Newtown Square, PA 19073

BATHS

- Formal powder room with Kohler Memoirs pedestal sink
- Spacious spa bath with large vanities, granite or quartz vanity tops
- Frameless shower door in spa bathroom
- Spa bathroom with 66" free-standing soaking tub & floor mount tub filler
- Spa bath with 12"x 12" floor tile , 10" x 14" wall tile and mosaic tiled shower floor
- Century Carriage House vanity cabinets with soft close drawers in a variety of colors
- Secondary baths - 12"x12" floor tile, 10"x14" wall tile and granite or quartz vanity tops

UTILITIES / CONSTRUCTION

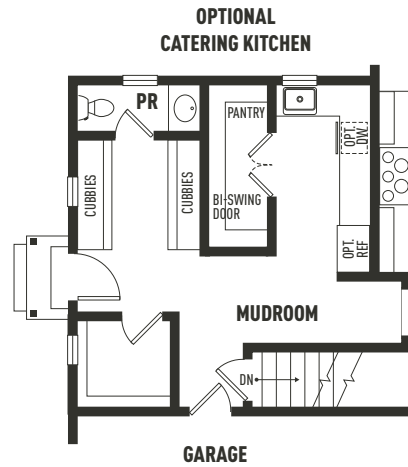
- 92% high efficiency gas heater
- 75-gallon gas hot water heater
- 15-SEER A/C
- 400 AMP service
- Well & septic
- Propane
- Energy efficient construction
 - Poured concrete foundation
 - Insulated garage doors
- Low E, low maintenance, tilt-in insulated windows for easy cleaning
- Stone and James Hardie cement board siding
- Underground electric, telephone and cable television

THE BENTLEY DIFFERENCE

For a half-century, the Bentley name has been synonymous with design excellence and superior quality construction.

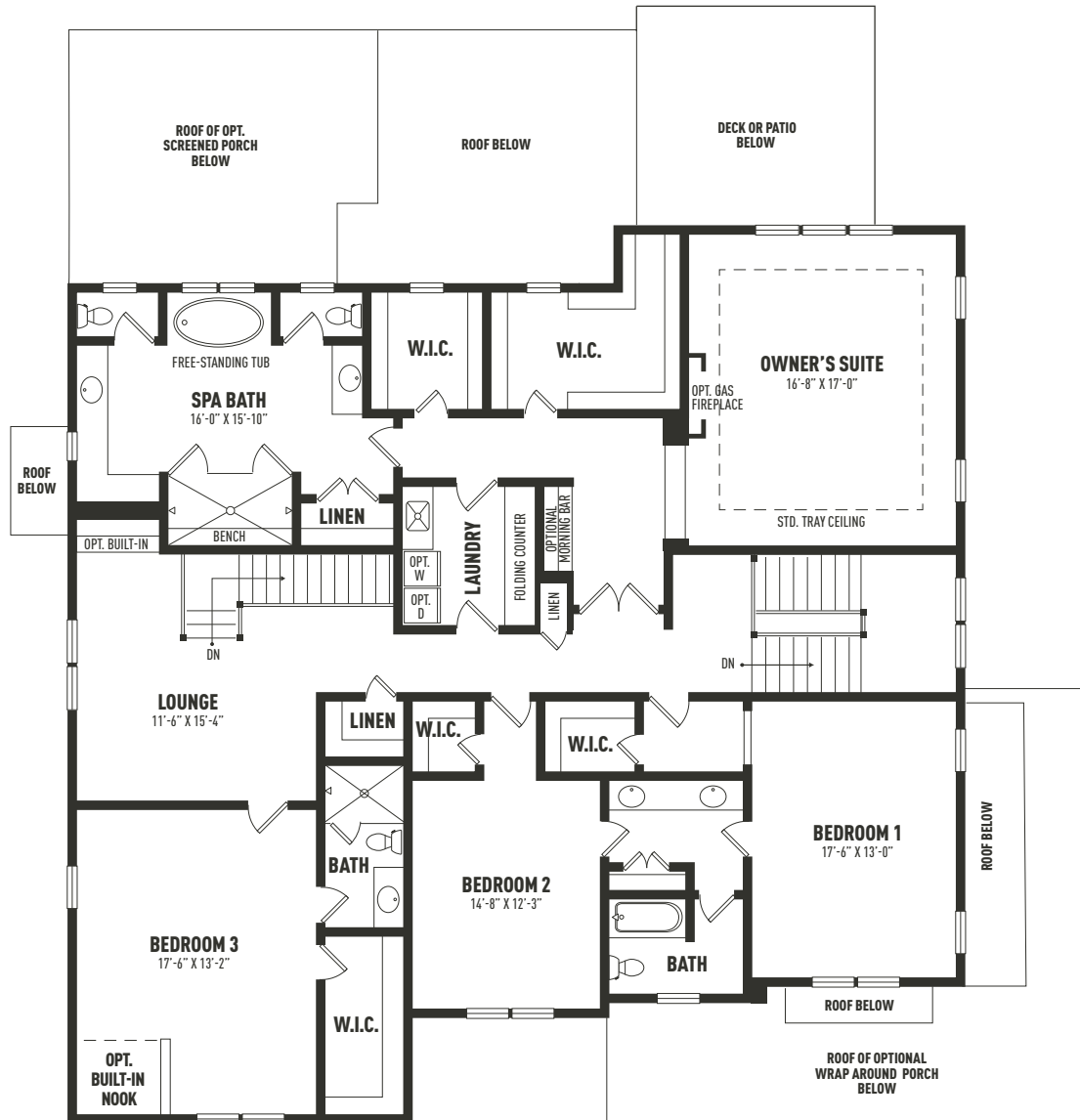
Personalize your home to perfection from a curated designer collection of options and upgrades

CHANDLER FIRST FLOOR



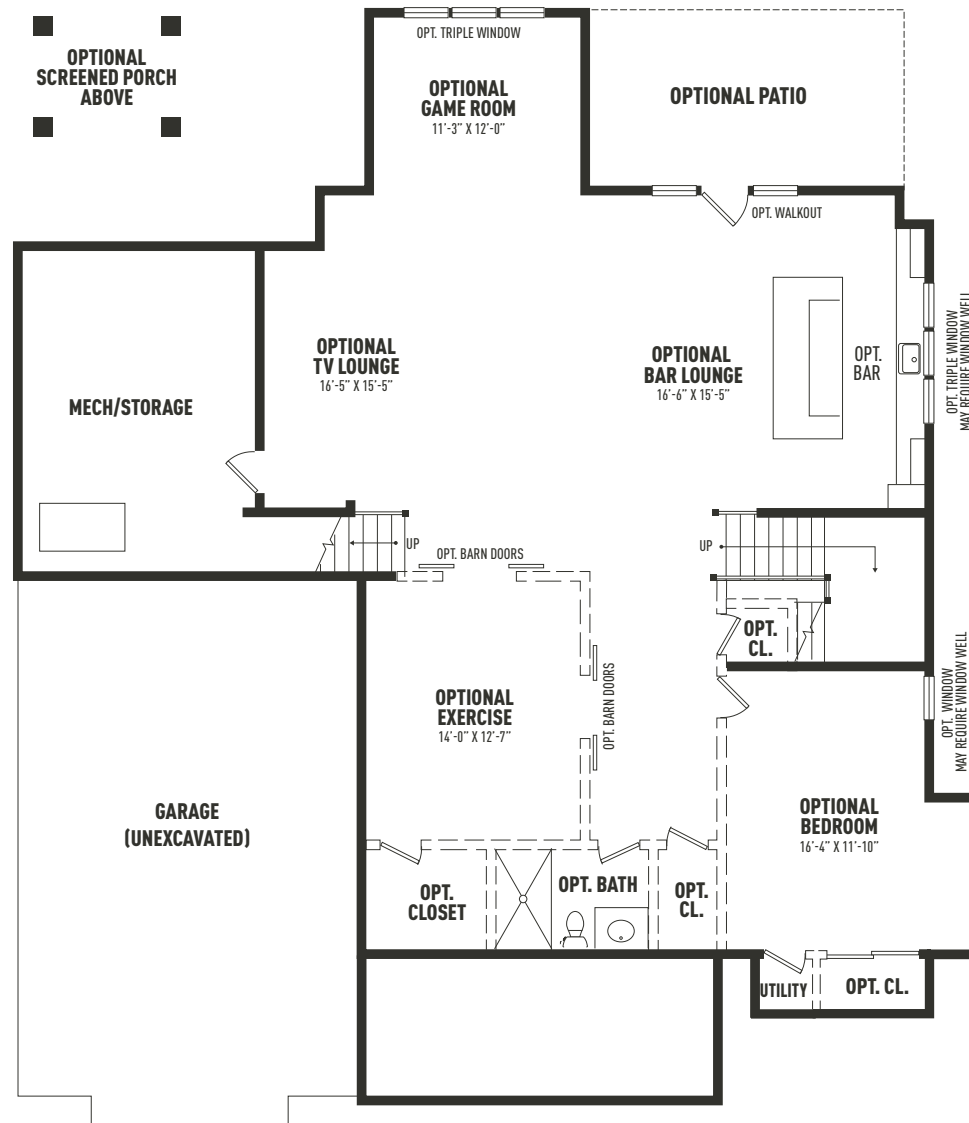
Sketches and illustrations are artist's renderings only. Details, dimensions and colors are subject to change and field variations. All sizes and dimensions are approximate. See sales manager for specifics relating to your home and homesite.

CHANDLER SECOND FLOOR

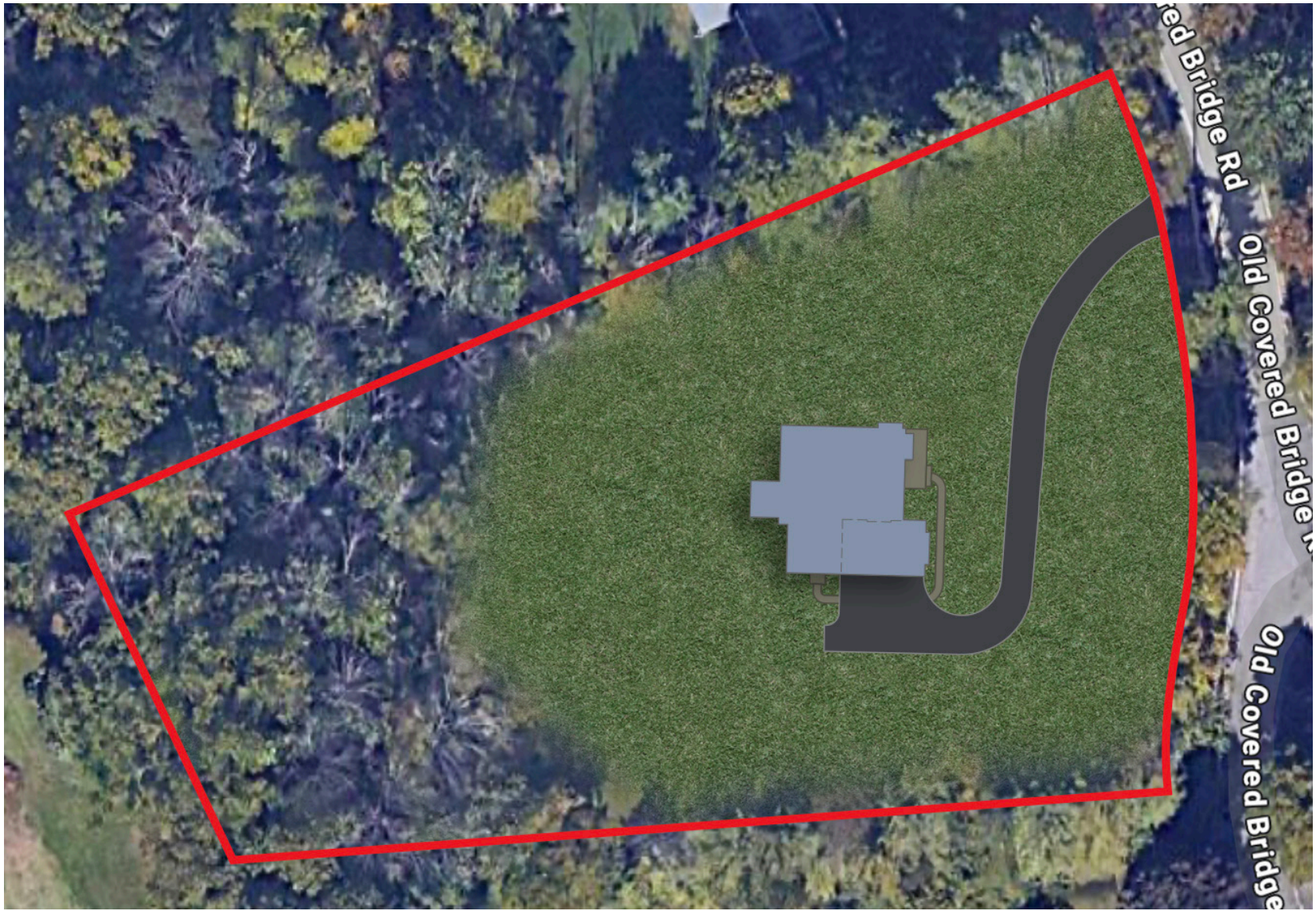


Sketches and illustrations are artist's renderings only. Details, dimensions and colors are subject to change and field variations. All sizes and dimensions are approximate. See sales manager for specifics relating to your home and homesite.

CHANDLER LOWER LEVEL



Sketches and illustrations are artist's renderings only. Details, dimensions and colors are subject to change and field variations. All sizes and dimensions are approximate. See sales manager for specifics relating to your home and homesite.



Old Covered Bridge Road, Newtown Square, PA 19073
Acreage: 2.0

TIBURON

252



PRESCOTT RD

252

OLD COVERED BRIDGE RD

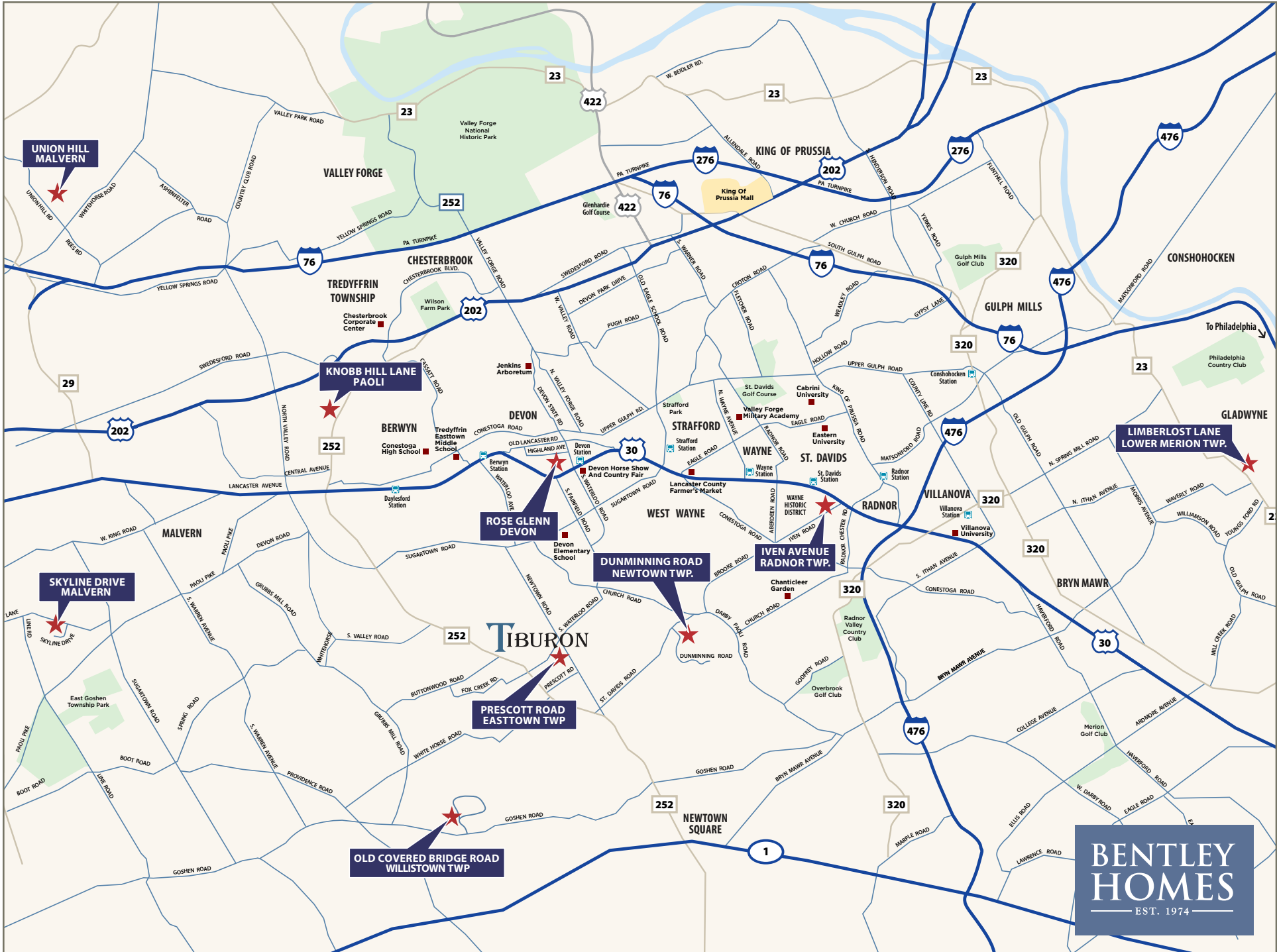


**OLD COVERED BRIDGE ROAD
WILLISTOWN TWP**

1

NEWTOWN
SQUARE





**UNION HILL
MALVERN**

**KNOBB HILL LANE
PAOLI**

**ROSE GLENN
DEVON**

**IVEN AVENUE
RADNOR TWP.**

**DUNMINNING ROAD
NEWTOWN TWP.**

**PRESCOTT ROAD
EASTTOWN TWP.**

**OLD COVERED BRIDGE ROAD
WILLISTOWN TWP.**

**SKYLINE DRIVE
MALVERN**

**LIMBERLOST LANE
LOWER MERION TWP.**

**BENTLEY
HOMES**
EST. 1974

— AVAILABLE CUSTOM HOMES —

ADDRESS	ACRE	FLOOR PLAN	SQ. FT. APPROX.	STATUS	PRICE TO DATE	EST. DELIVERY
2110 Union Hill Road Malvern, PA 19335	2.2	Atlee Custom	4,346	Available	*\$2,196,473	Early Fall 2025
Old Covered Bridge Road Newtown Square, PA 19073	2.0	Chandler Custom	5,235	Coming Soon	TBD	TBD

** Includes lot premium and options selected to date.*



FOR ADDITIONAL INFORMATION

Please contact: Art Herling 610-225-7400 (office) | 215-431-3944 (mobile)
ART @ LNF.com | visit www.bentleyhomes.com

Tiburon Furnished Model Home & Sales Office: Open Daily 12 pm to 5 pm
916 Prescott Rd, Berwyn, PA 19312 (Easttown Twp.)

Please contact Art Herling for individual floor plan and homesite specifics. All square footage calculations are approximate. Information & pricing subject to change at any time without notice 3/25/25.



— AVAILABLE CUSTOM HOMES —

ADDRESS	ACRE	FLOOR PLAN	SQ. FT. APPROX.	STATUS	PRICE TO DATE	EST. DELIVERY
317 Iven Avenue Wayne, PA 19087	.33	Iven Custom	4,741	Available	*\$2,358,042	Available Now!
319 Iven Avenue Wayne, PA 19087	.32	Iven Custom	4,741	SOLD		Spring 2025
2 Skyline Drive Malvern, PA 19355	2.90	Chandler Custom	5,235	SOLD		Summer 2025
916 Prescott Road Berwyn, PA 19312	1.00	Chandler Custom	6,929	SOLD		Summer 2025

* Includes lot premium and options selected to date.

— ROSE GLENN / 10 HOMESITES - COMING SOON —

ADDRESS	ACRE	FLOOR PLAN	SQ. FT. APPROX.	STATUS	PRICE TO DATE	EST. DELIVERY
228 Highland Ave Devon, PA 19333	TBD	Atlee	4,346	TBD	TBD	Coming Soon
228 Highland Ave Devon, PA 19333	TBD	Baldwin	4,039	TBD	TBD	Coming Soon

* Includes lot premium and options selected to date.



FOR ADDITIONAL INFORMATION

Please Contact: Christopher Perez Sales & Marketing Manager
Direct: 610-553-3530 | cperez@bentleyhomes.com | visit www.bentleyhomes.com

Tiburon Furnished Model Home & Sales Office: Open Daily 12 pm to 5 pm
916 Prescott Rd, Berwyn, PA 19312 (Easttown Twp.)

See Sales Manager for individual floor plan and homesite specifics. All square footage calculations are approximate. Information and pricing subject to change at any time without notice 03/21/2025



BERKSHIRE HATHAWAY
HomeServices
Fox & Roach, REALTORS®