
ROSE GLENN
A Bentley Community
Devon, Pennsylvania



[BentleyHomes.com](https://www.BentleyHomes.com)

Rose Glenn • Devon, PA

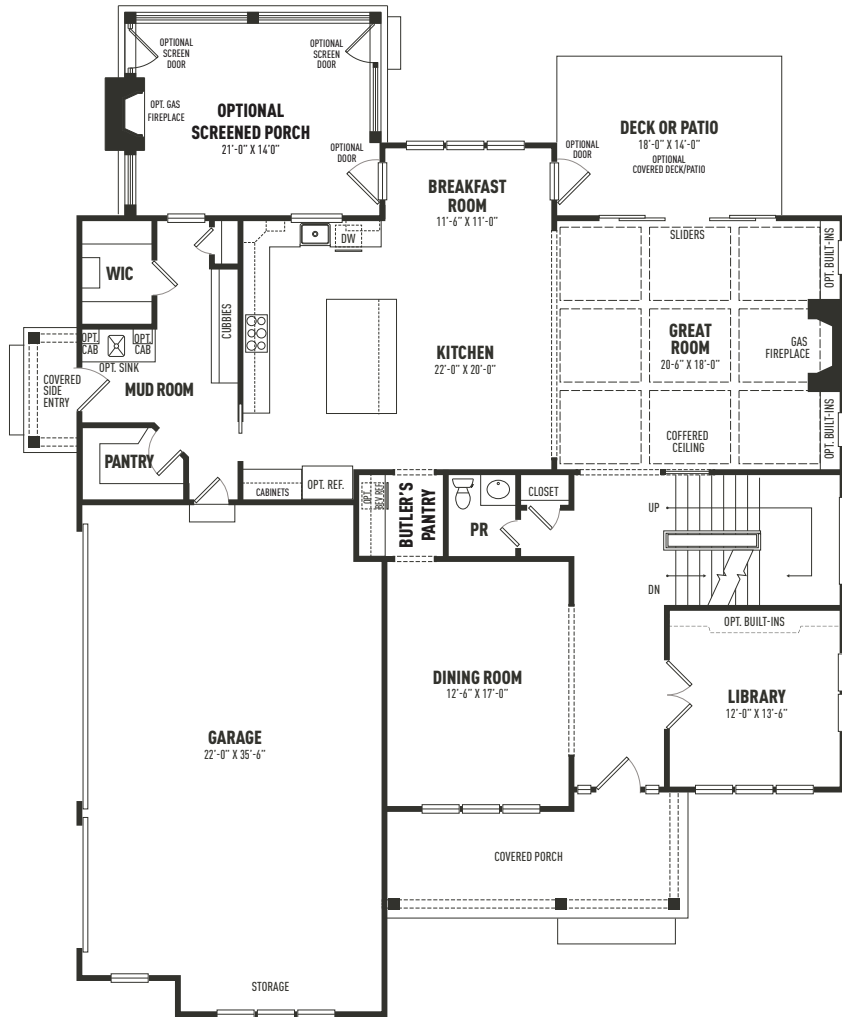




Rose Glenn • Devon, PA

Model: Logan
3,685 Square Feet
4 Bedrooms | 4.5 Baths | 3 Car Garage
Base Price: \$2,299,900

LOGAN FIRST FLOOR

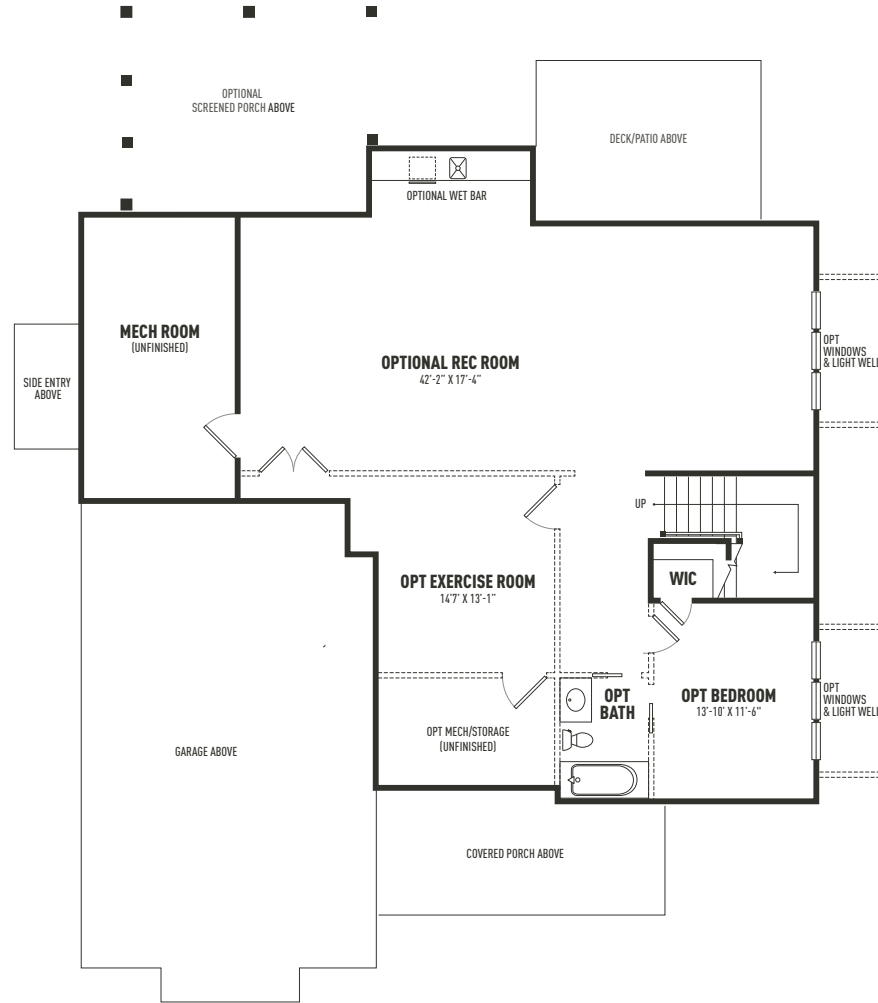


LOGAN SECOND FLOOR



Sketches and illustrations are artist's renderings only. Details, dimensions and colors are subject to change and field variations. All sizes and dimensions are approximate. See sales manager for specifics relating to your home and homesite.

LOGAN LOWER LEVEL



Sketches and illustrations are artist's renderings only. Details, dimensions and colors are subject to change and field variations. All sizes and dimensions are approximate. See sales manager for specifics relating to your home and homesite.



Rose Glenn • Devon, PA

Model: Atlee A Elevation
Square Footage: 4,346
4 Bedrooms | 3.5 Baths | 3 Car Garage
Base Price: \$2,399,900



Rose Glenn • Devon, PA

Model: Atlee Optional B Elevation
Square Footage: 4,346
4 Bedrooms | 3.5 Baths | 3 Car Garage



Rose Glenn • Devon, PA

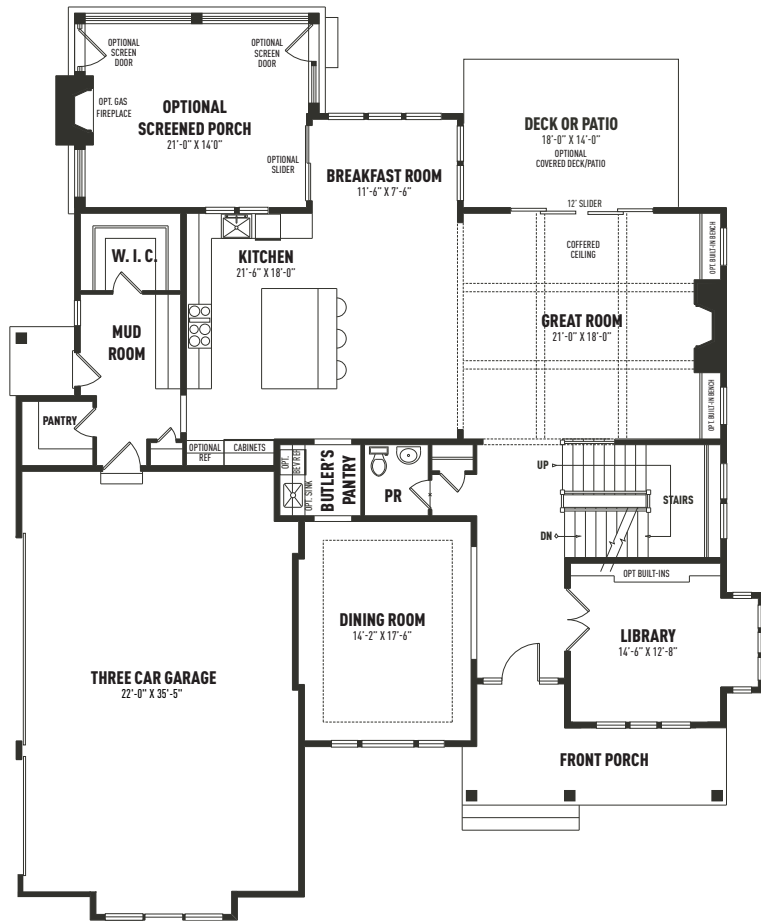
Model: Atlee Optional E Elevation
Square Footage: 4,346
4 Bedrooms | 3.5 Baths | 3 Car Garage



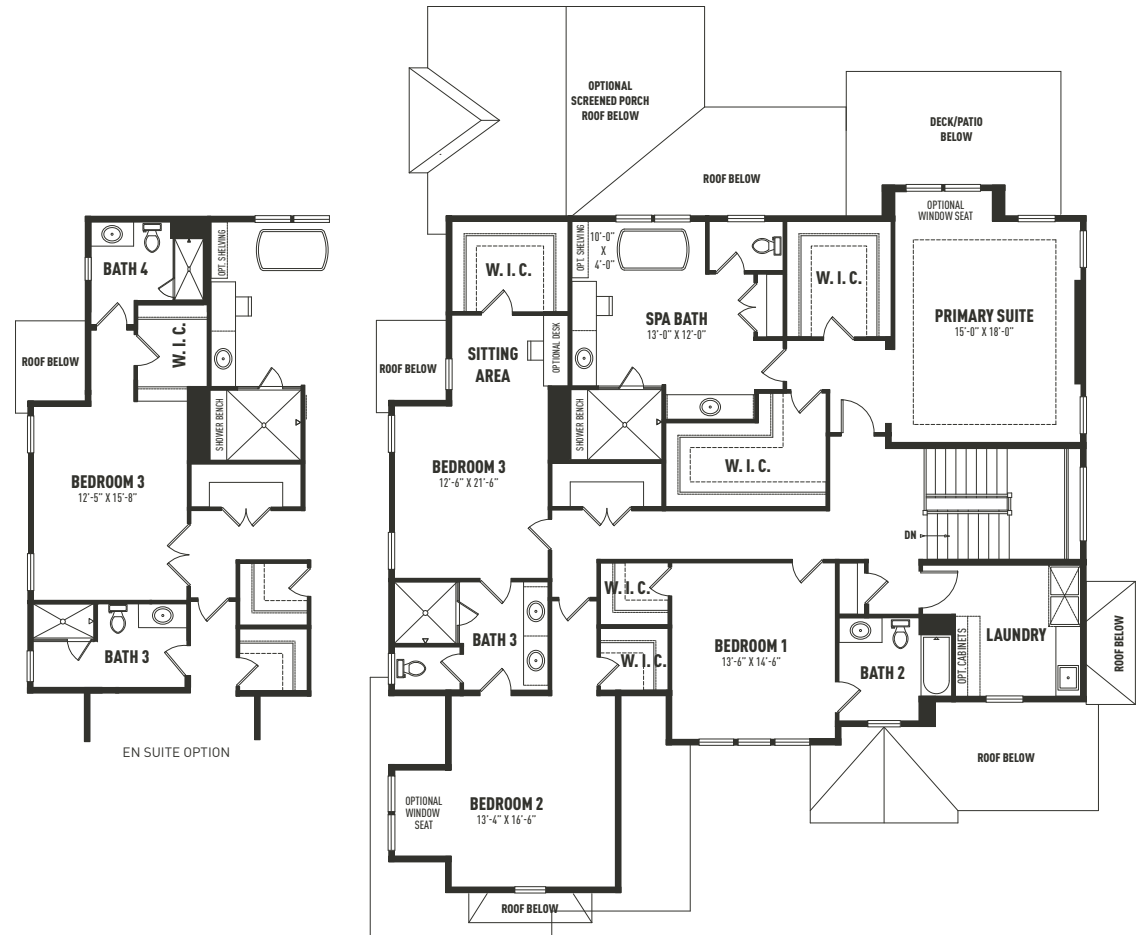
Rose Glenn • Devon, PA

Model: Atlee Optional G Elevation
Square Footage: 4,346
4 Bedrooms | 3.5 Baths | 3 Car Garage

ATLEE A FIRST FLOOR

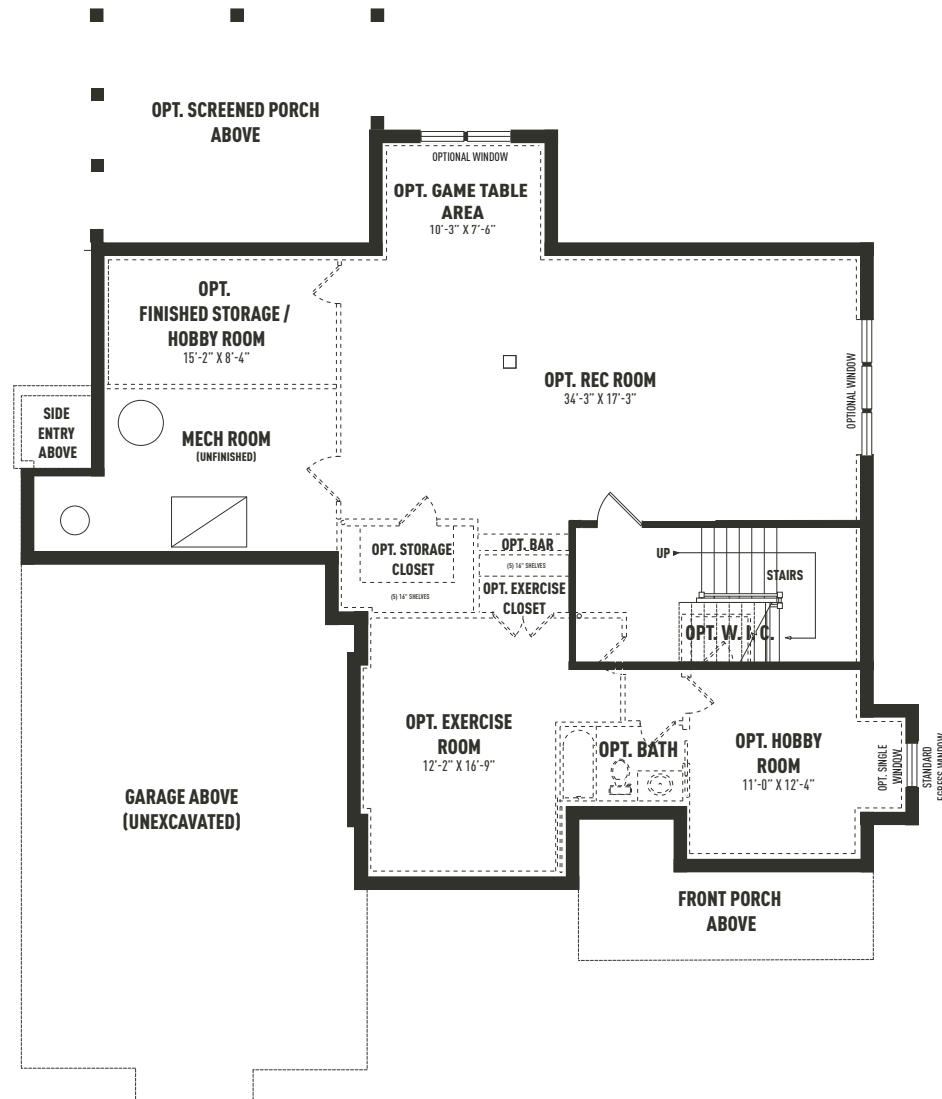


ATLEE A SECOND FLOOR



Sketches and illustrations are artist's renderings only. Details, dimensions and colors are subject to change and field variations. All sizes and dimensions are approximate. See sales manager for specifics relating to your home and homesite.

ATLEE A LOWER LEVEL



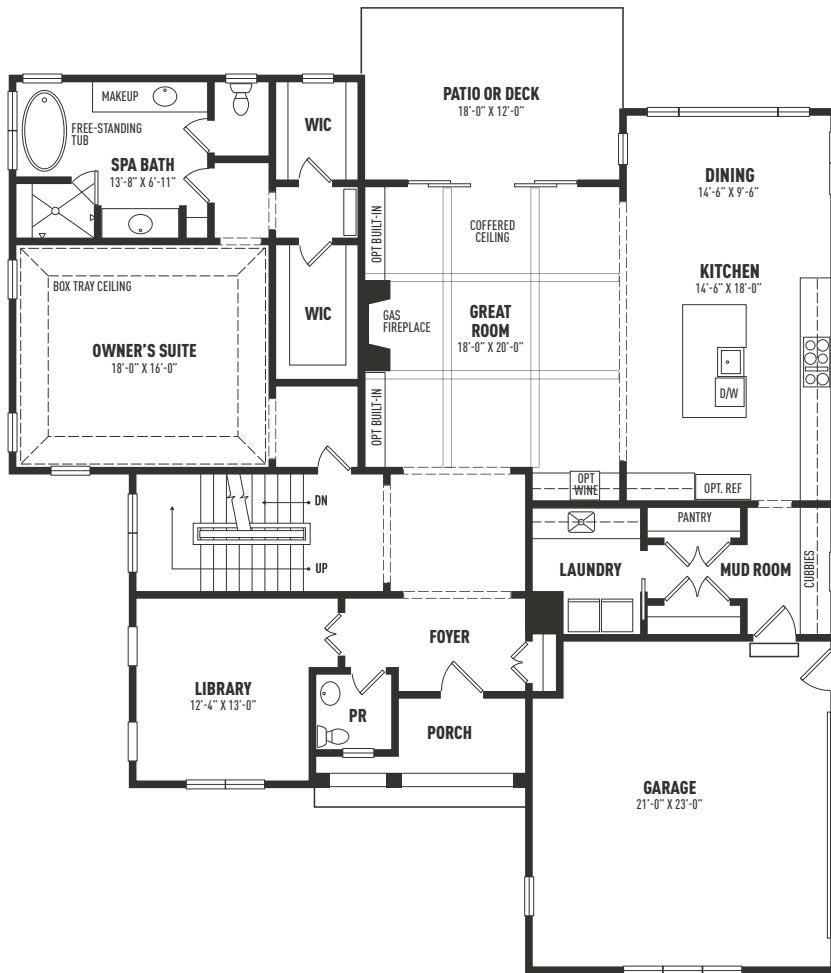
Sketches and illustrations are artist's renderings only. Details, dimensions and colors are subject to change and field variations. All sizes and dimensions are approximate. See sales manager for specifics relating to your home and homesite.



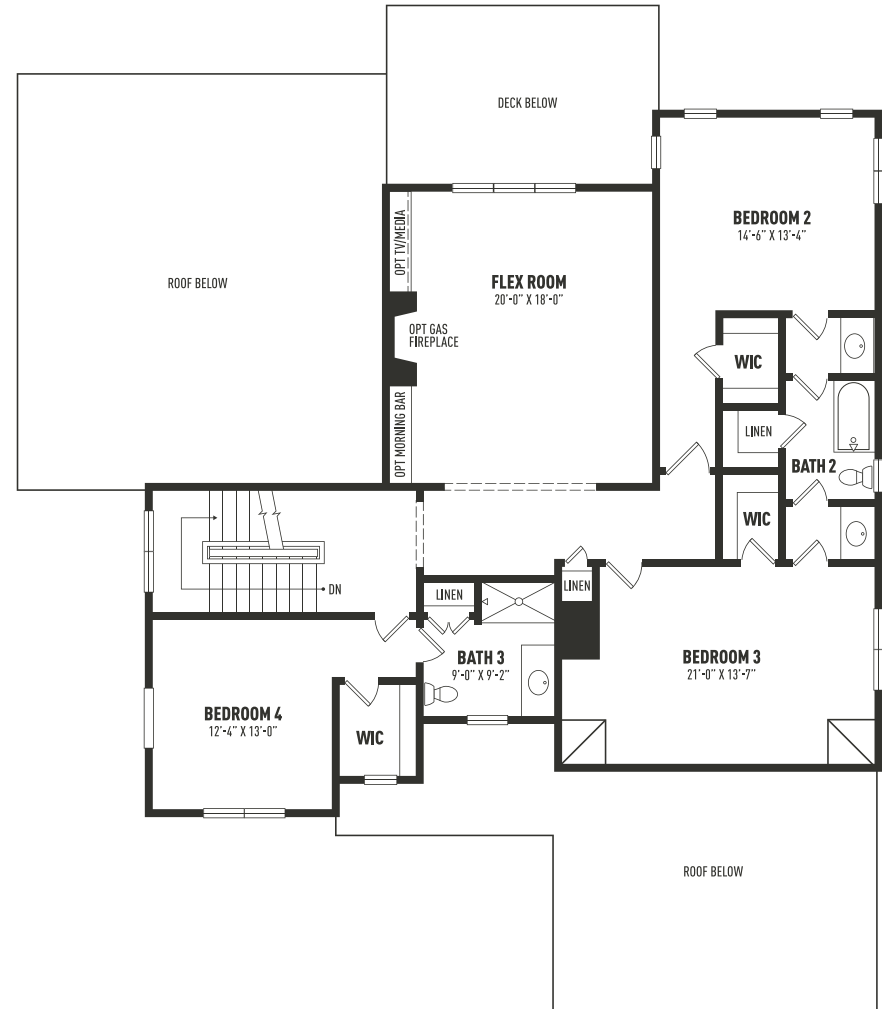
Rose Glenn • Devon, PA

Model: Baldwin
Square Footage: 4,039
4 Bedrooms | 3.5 Baths | 2 Car Garage
Base Price: \$2,349,900
Features a first floor primary suite

BALDWIN FIRST FLOOR

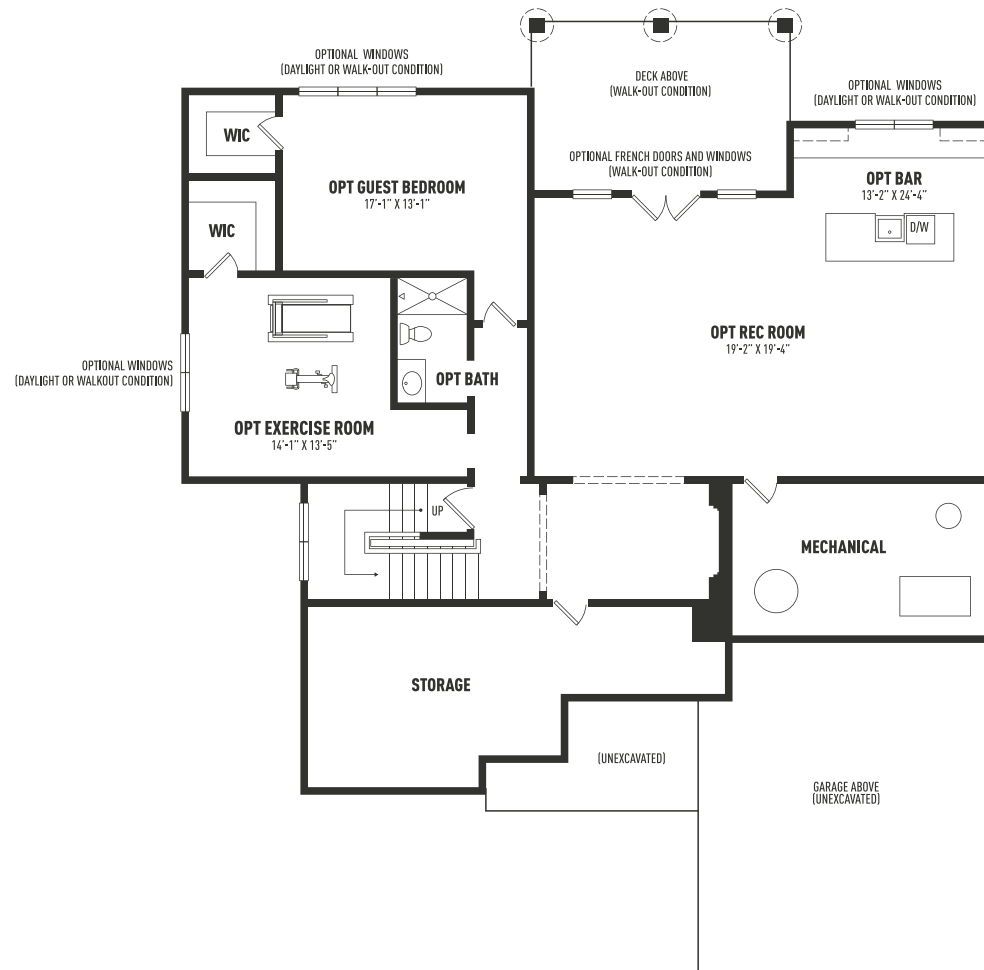


BALDWIN SECOND FLOOR



Sketches and illustrations are artist's renderings only. Details, dimensions and colors are subject to change and field variations. All sizes and dimensions are approximate. See sales manager for specifics relating to your home and homesite.

BALDWIN LOWER LEVEL



Sketches and illustrations are artist's renderings only. Details, dimensions and colors are subject to change and field variations. All sizes and dimensions are approximate. See sales manager for specifics relating to your home and homesite.

SIGNATURE APPOINTMENTS

Rose Glenn • Devon, PA

At Bentley Homes we create homes with trendsetting architecture, elevated finishes and a comfortable, relaxed lifestyle. Your home is your sanctuary.

LOCATION

- Ten half acre homesites located on the Main Line less than a half mile from the Devon train station
- Renowned Tredyffrin/Easttown school district

ARCHITECTURAL

- Design by nationally acclaimed architects
- Open, airy beautiful floor plans offering 4-5 bedrooms, 3.5-4.5 baths
- Baldwin model features first floor primary suite
- Oversized two and three car garages
- Coffered ceiling and gas fireplace in great room
- 6.5" wide-plank engineered wood flooring
- Classic 2-panel solid core interior doors
- Main staircase with stained white oak stair treads & handrails, painted newel posts, balusters & risers
- Oversized 7 ¼" baseboard trim

- Abundant closet space with melamine shelving and rod
- Built-in cubbies in mudroom
- Composite deck or large-brushed concrete patio (depending on grade)

KITCHEN

- Professionally designed layout with 42" Century Carriage House soft close cabinets
- Granite or quartz or countertops with 3"x 6" DalTile Rittenhouse Square staggered subway backsplash
- Stainless steel sink with single lever Kohler Simplice faucet in polished chrome with pull-out spray
- Luxury appliances including:
 - 36" Bosch 6-burner gas range
 - Bosch stainless steel dishwasher
 - Bosch stainless steel microwave drawer
 - Chimney style range hood
- Pantry storage and butler's pantry

SIGNATURE APPOINTMENTS

Rose Glenn • Devon, PA

BATHS

- Formal powder room with Kohler Memoirs pedestal sink and Kohler widespread tempered faucet in polished chrome.
- Spacious luxurious spa bath featuring:
 - Kohler Tempered 8" widespread faucets in polished chrome
 - Separate commode room
 - Free standing soaking tub and floor mount tub filler
 - Large shower with frameless shower door
- All baths feature:
 - Quartz or granite countertops
 - Century Carriage House vanities with soft close drawers
 - 12" x 12" floor tiles with 10 x 14" wall tiles
 - All showers have mosaic tile floors
 - Kohler Highline toilets

UTILITIES / CONSTRUCTION

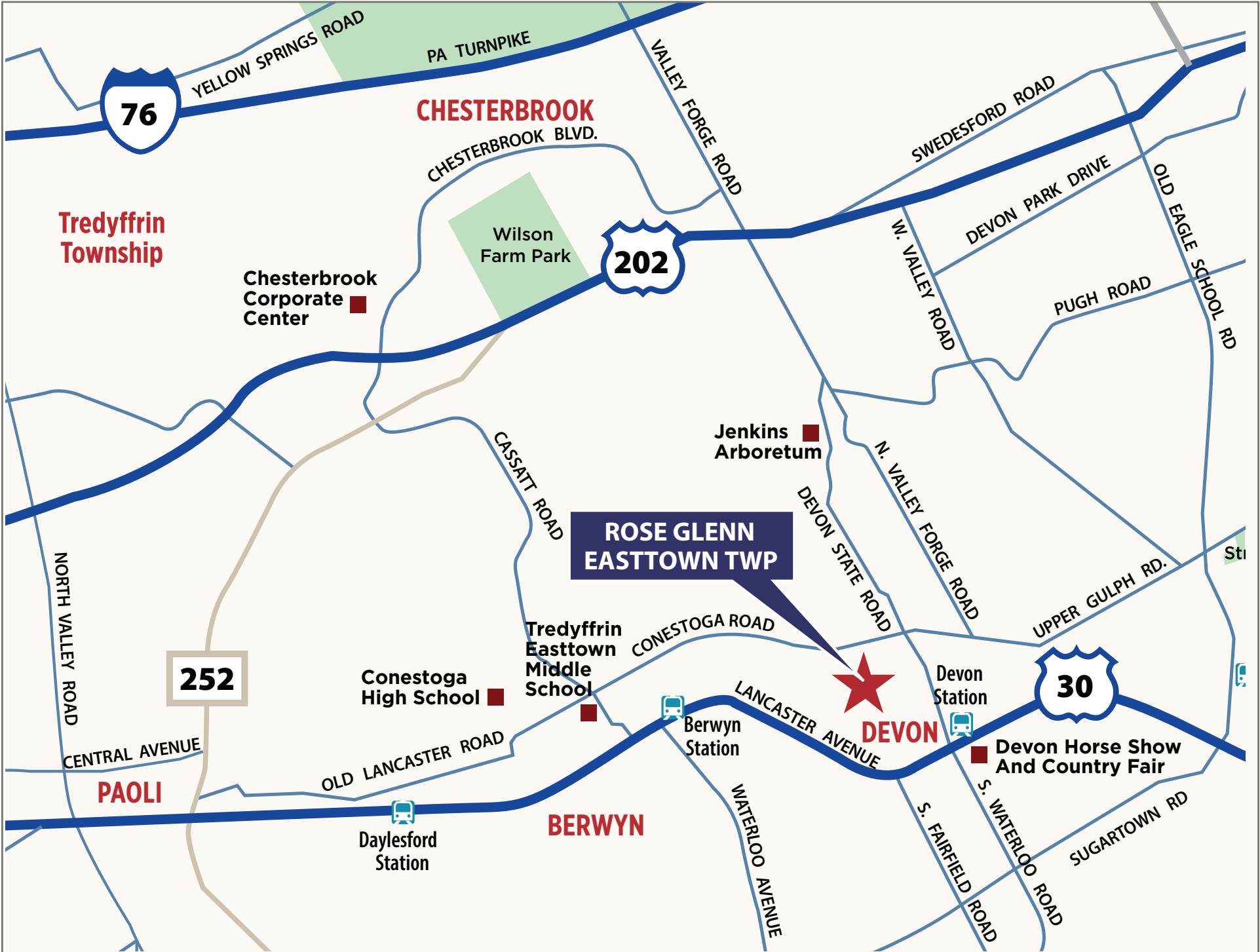
- 92% high efficiency gas heater
- 75-gallon gas hot water heater
- 15-SEER A/C
- 400 AMP service
- Public sewer & water
- Natural gas
- Energy efficient construction:
 - Poured concrete foundation
 - Insulated garage doors
- Viwinco double hung windows
- Stone and James Hardie cement board siding
- Underground electric, telephone and cable TV

Homeowner's Association (HOA) - Please consult your sales manager regarding the Rose Glenn HOA its responsibilities and associated fees.

THE BENTLEY DIFFERENCE

For 50 years, the Bentley name has been synonymous with design excellence and superior quality construction.

Personalize your home to perfection from a curated designer collection of options and upgrades



76

CHESTERBROOK

Tredyffrin Township

Chesterbrook Corporate Center

Wilson Farm Park

202

Jenkins Arboretum

ROSE GLENN EASTTOWN TWP

Tredyffrin Easttown Middle School

Conestoga High School

Devon Station

30

Devon Horse Show And Country Fair

Berwyn Station

BERWYN

Daylesford Station

252

PAOLI

NORTH VALLEY ROAD

YELLOW SPRINGS ROAD

PA TURNPIKE

VALLEY FORGE ROAD

SWEDESFORD ROAD

CHESTERBROOK BLVD.

DEVON PARK DRIVE

OLD EAGLE SCHOOL RD

PUGH ROAD

W. VALLEY ROAD

N. VALLEY FORGE ROAD

UPPER GULPH RD.

DEVON STATE ROAD

CONESTOGA ROAD

LANCASTER AVENUE

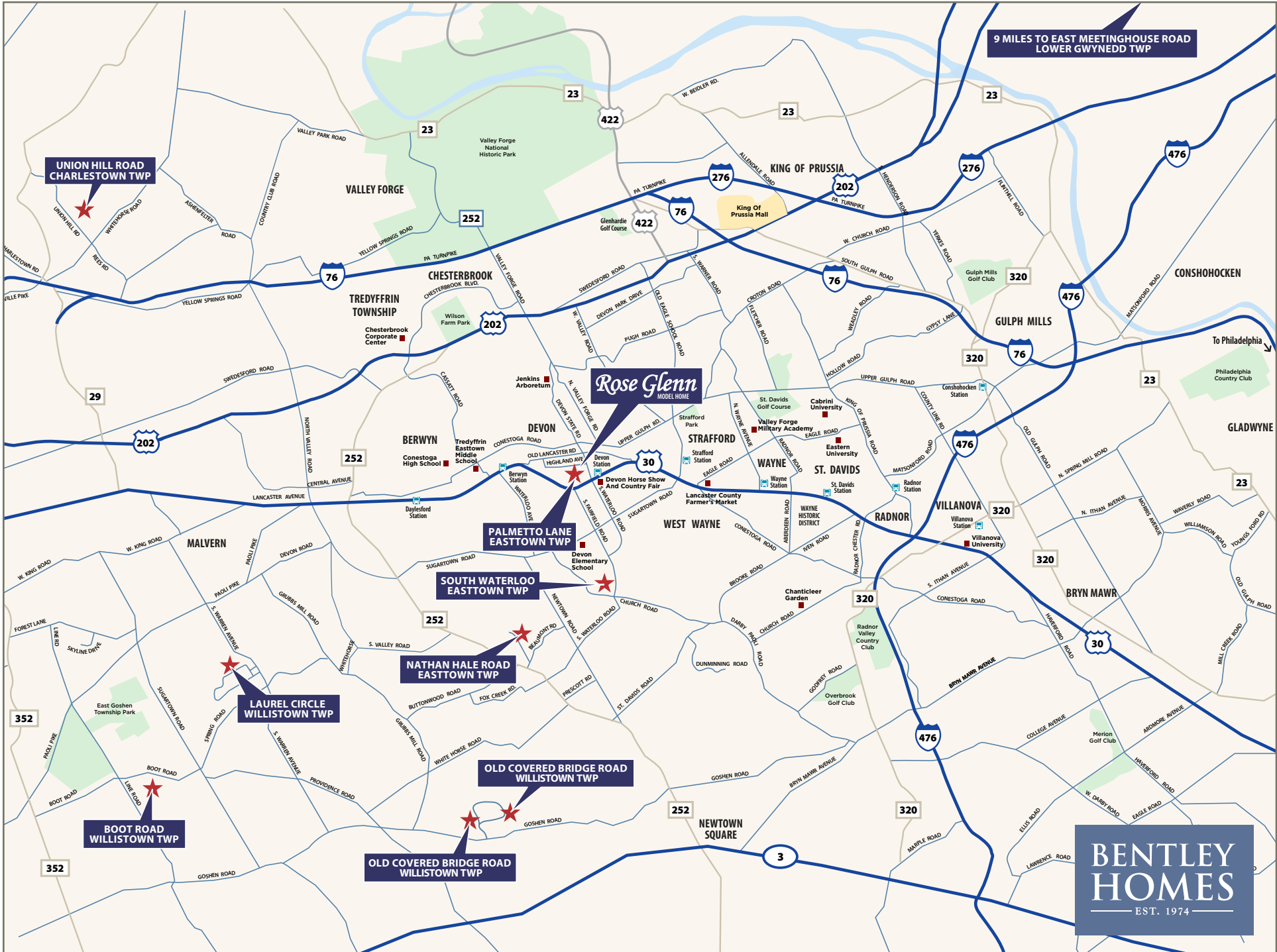
WATERLOO AVENUE

S. FAIRFIELD ROAD

S. WATERLOO ROAD

SUGARTOWN RD

CENTRAL AVENUE



9 MILES TO EAST MEETINGHOUSE ROAD LOWER GWYNEDD TWP

UNION HILL ROAD CHARLESTOWN TWP

Rose Glenn
MODEL HOME

PALMETTO LANE EASTTOWN TWP

SOUTH WATERLOO EASTTOWN TWP

NATHAN HALE ROAD EASTTOWN TWP

LAUREL CIRCLE WILLISTOWN TWP

BOOT ROAD WILLISTOWN TWP

OLD COVERED BRIDGE ROAD WILLISTOWN TWP

BENTLEY HOMES
EST. 1974

— ROSE GLENN MODELS —

MODEL	SQUARE FOOTAGE	BASE PRICE
Logan	3,685	\$2,299,900
Baldwin	4,039	\$2,349,900
Atlee	4,346	\$2,399,900

— ROSE GLENN SPEC HOME —

ADDRESS & HOMESITE #	ACRE	FLOOR PLAN	SQ. FT.	STATUS	PRICE TO DATE	EST. DELIVERY
104 Palmetto Lane, Devon, PA 19333 #3	0.50	Atlee Custom	4,346±	SOLD	*\$2,695,000	Immediately

* Completed sale price including premiums, upgrades & options.

— ROSE GLENN HOMESITES —

HOMESITE #	ACRE	PREMIUM
1	0.60	RESERVED
2	0.52	Model Home
3	0.50	SOLD
4	0.53	SOLD
5	0.58	SOLD

— ROSE GLENN HOMESITES —

HOMESITE #	ACRE	PREMIUM
6	0.80	SOLD
7	0.55	-\$0-
8	0.51	SOLD
9	0.48	-\$15,000-
10	0.75	Unavailable



FOR ADDITIONAL INFORMATION

Please contact: Nicole Rymer 610-553-3530
NRymer@bentleyhomes.com | visit bentleyhomes.com

Please contact Nicole Rymer for individual floor plan and homesite specifics. All square footage calculations are approximate. Information & pricing subject to change at any time without notice 6/22/26.



— AVAILABLE CUSTOM HOMES —

ADDRESS	ACRE	FLOOR PLAN	SQ. FT. APPROX.	STATUS	PRICE TO DATE	EST. DELIVERY
104 Palmetto Lane Devon, PA 19333	0.50	Atlee Custom	4,346	SOLD	*\$2,695,000	Immediately
105 Palmetto Lane Devon, PA 19333	0.51	Atlee Custom	4,346	SOLD	\$2,501,691	Spring 2026
837 Nathan Hale Road Berwyn, PA 19312	1.0	Chandler Custom	5,235	SOLD	\$2,849,900	Fall 2026
718 South Waterloo Road Devon, PA 19333	1.0	Chandler Custom	5,235	Available	**\$3,179,900	Fall 2026
1344 East Meetinghouse Road Lower Gwynedd, PA 19002	1.5	Iven II Custom	5,044	Available	**\$2,187,900	Winter 2026
39 Old Covered Bridge Road Newtown Square, PA 19073	5.0	Atlee Custom	4,346	Available	**\$2,995,000	Winter 2026

* Completed sale price including premiums, upgrades & options.

** Includes lot premium and options selected to date.



FOR ADDITIONAL INFORMATION

Please contact: Art Herling 215-431-3944 (mobile) | Art@Howardhanna.com
 Nicole Rymer 610-553-3530 | NRymer@bentleyhomes.com | visit bentleyhomes.com

Please contact Art Herling or Nicole Rymer for individual floor plan and homesite specifics. All square footage calculations are approximate. Information & pricing subject to change at any time without notice 6/22/26.



**HOWARD
HANNA**
REAL ESTATE SERVICES

— AVAILABLE CUSTOM HOMES —

ADDRESS	ACRE	FLOOR PLAN	SQ. FT. APPROX.	STATUS	PRICE TO DATE	EST. DELIVERY
10 Laurel Circle Malvern, PA 19355	2.1	Atlee Custom	4,346	Available	*\$2,659,927	Summer 2026

* Includes lot premium and options selected to date.



FOR ADDITIONAL INFORMATION

Please contact: Bill McGarrigle 484-874-4777
Bill@billmcgarrigleteam.com | visit bentleyhomes.com

Please contact Bill McGarrigle for individual floor plan and homesite specifics. All square footage calculations are approximate. Information & pricing subject to change at any time without notice 6/22/26.



— AVAILABLE CUSTOM HOMES —

ADDRESS	ACRE	FLOOR PLAN	SQ. FT. APPROX.	STATUS	PRICE TO DATE	EST. DELIVERY
2110 Union Hill Road Malvern, PA 19335	2.2	Atlee Custom	5,204	Available	*\$2,249,900	Immediately

* Completed sale price including premiums, upgrades & options.



FOR ADDITIONAL INFORMATION

Please contact: Meghan Chorin 610-299-9504
meghan.chorin@compass.com | visit bentleyhomes.com

Please contact Meghan Chorin for individual floor plan and homesite specifics. All square footage calculations are approximate. Information & pricing subject to change at any time without notice 6/22/26.

